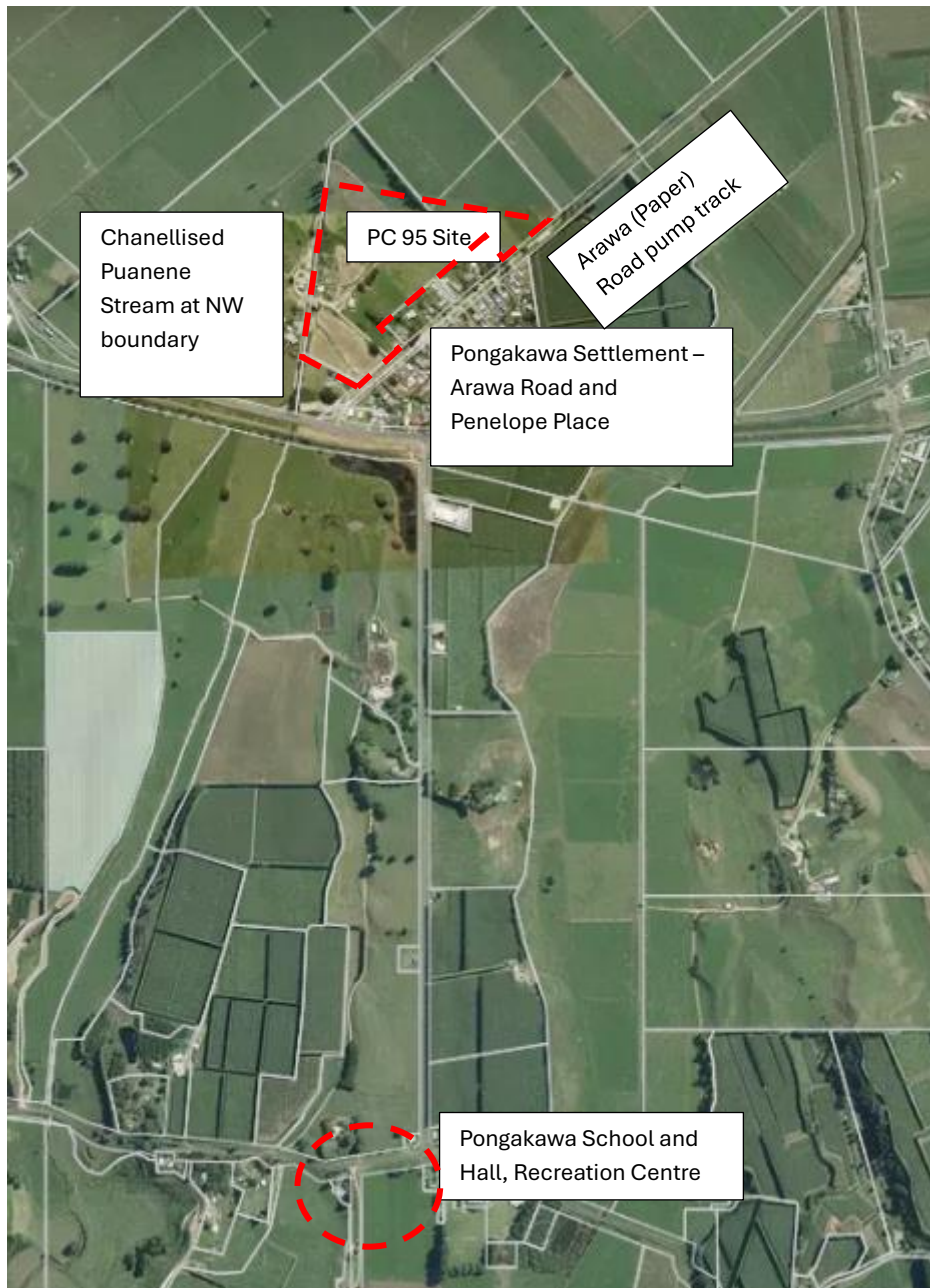


Site Visit Potential Points of Interest - For PC95 Commissioners

Site visit potential points of interest to the commissioners are as follows:

1. At/proximate to the Pongakawa residential settlement at Arawa Road:
 - a. PC95 site;
 - b. Arawa Road – paper road pump track recently commenced construction;
 - c. Settlement itself – Arawa Road, Penelope Place streetscapes
 - d. Pongakawa School community and recreation facilities.



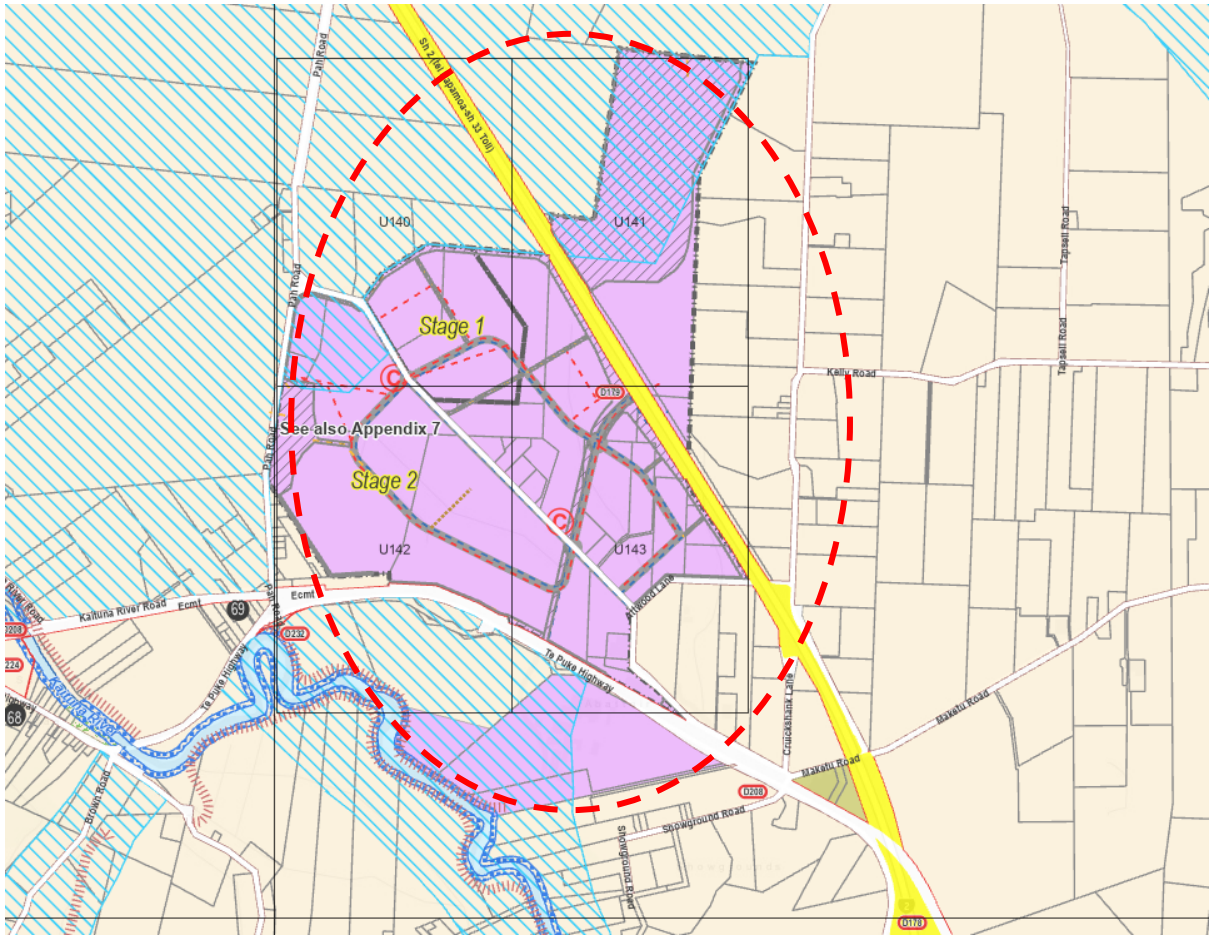
2. Plan Change 95 site itself:

- Ecological improvements made over time, noting these service farm drains at present, may be of interest to commissioners.



3. Rangiuru Business Park:

- Young Road to ascertain general progress (NE side of Young Road under construction) on the Business Park.
- Includes interchange under construction, visible when passing through the park on the Eastern Link Motorway (over-bridge has been placed).



4. Vacant Residential Zone/Future Urban Zone land – growth area in west of Te Puke where recent subdivision activity has occurred, removing orchards as a result of the zoning. Included in Plan Change 92 yield calculations (zoning however pre-dates PC92). This is where growth is expected to predominantly otherwise come online in Te Puke market.

