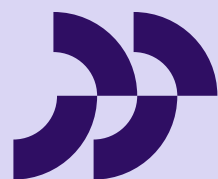




Te Mahere Papa Rēhia mō Kaimai  
**Kaimai Ward Reserve  
Management Plan 2025**

Consultation Document



**Western  
Bay of Plenty**  
District Council

# Summary of proposed changes

We are reviewing the Kaimai Ward Reserve Management Plan, and we'd like to hear from the community about the proposed changes and any other ideas for improvements.

The purpose of the Reserve Management Plan is to make sure our reserves meet the needs of local communities, Tangata Whenua, and the environment. It also helps guide how we take care of, improve, and develop these spaces in the future.

The proposed updates to the document include new concept plans, adding new reserves, updating inventory items, adding aerial images, and refreshing the format and text. We're also including updated information about the general population, demographic details, Tangata Whenua, community groups, and other key stakeholders.

Your input is important, so we're excited to hear your thoughts!

The table below sets out the proposed key changes to the RMP.

## Reserve specific information

### Enhancements

Enhancements and maintenance of existing reserves and shared paths.

New shared paths in the Minden, along the Wairoa River esplanades, and around Mangawhai Pā Historic Reserve.

New cultural and historical elements.

New sports hard court at the Ōmokoroa Sports Ground.

New playground at the Omanawa Community Hall and new swing set at the Oropi War Memorial Hall.

Potential new community garden at McDonnell Street Reserve and Tui Glen Road Reserve.

### Essential items for new reserves

Bollards, bins, signs, etc.

### Te Puna Quarry Park

Collaboration with Te Puna Quarry Park Society to explore future governance and management approaches including concept planning.

### Reclassification of reserves

Investigate reclassification of identified reserves to reflect their current use and reclassification of known cultural sites to Historic Reserve status.

### Memorialisation

Establishment of a Memorial Wall in Ōmokoroa.

### Potential future ward change

- Kaiate Falls Esplanade Reserve
- Pahoia Domain
- Pahoia Landing Reserve

## District-wide information

### Pest Management

New Pest Management Policy (Policy 28)

## New reserves

---

- l’Anson Bush Reserve
- Jack Lloyd Reserve
- Josephine Place Reserve
- Kaimai View Reserve
- Kowhai Reserve
- Kuaka Rise Reserve
- McDonnell Street Reserve
- Minden Hill Lane Reserve
- Minden Lookout
- Ridge Drive Reserve
- Te Puna Quarry Park
- Tui Glen (Road Reserve)
- Vantage Place Reserve
- Wāhi o Te Hakao
- Wāhi o Te Kakaramea
- Wāhi o Te Tawa ki Tahataharoa

## Proposed major improvement works

---

### Concept Plan development for:

- Te Puna Quarry Park
- Wāhi o Te Hakao
- Wāhi o Te Tawa ki Tahataharoa

## Proposed minor improvement works

---

All proposed enhancements

Essential items for new reserves

Te Puna Quarry Park governance and management approach

Reclassification of reserves

Memorial Wall in Ōmokoroa

## Estimated costs

---

**\$1.9M**

Proposed major improvement works

**\$300K**

Proposed minor improvement works

Majority of the remaining items can be covered using existing budgets.



# Proposed name changes

Council has acquired new reserves in the Kaimai ward since the last review of the RMP in 2016. These reserves may require the development of concept plans and some minor or major capital expenditure in the future. Additionally, each reserve is to be named through a formal resolution in accordance with the [District-wide RMP Naming Policy 8](#).

Pirirākau hapū, with the support of Ngāti Taka, provided the proposed names to Council, in accordance with our naming policy. These names reflect a deep connection to the land and include seven reserves recognised as being significant cultural sites to Pirirākau hapū. The name fixture, 'Wāhi ō', alongside the use of full Te Reo Māori for culturally significant sites, is used deliberately to preserve the reserve's place and to honour the traditional names passed down by tangata whenua. The below table displays the proposed names for community feedback.

Proposed and current known name	Location	Origins
<b>Ōmokoroa</b>		
<b>Bramley Reserve</b> Known as: McDonnell Street Reserve <i>See page 49 of draft RMP</i>	37-39 McDonnell Street, Ōmokoroa	The Bramley name was presented by five residents of McDonnell Street.
<b>Kowhai Reserve</b> Known as: Lynley Park Drive Reserve <i>See page 41 of draft RMP</i>	Holyoake Terrace, Ōmokoroa	Relates to Kowhai to be planted to attract Tui to the reserve.
<b>Kuaka Rise Reserve</b> Known as: 12 Kuaka Rise <i>See page 43 of draft RMP</i>	12 Kuaka Rise, Ōmokoroa	Relates to the Kuaka (bar-tailed godwit) who habitat in the nearby Mangawhai Bay.
<b>Wāhi ō Te Kakaramea</b> Known as: Lynley Park Drive Reserve <i>See page 78 of draft RMP</i>	Lynley Park Drive, Ōmokoroa	Reflects cultural significance to Mana Whenua and the name of the original stream at this location.
<b>Wāhi ō Te Mangawhai</b> Known as: Josephine Place Reserves <i>See page 37 of draft RMP</i>	Josephine Place/ Lynley Park Drive, Ōmokoroa	Reflects cultural significance to Mana Whenua and connection with the adjacent Mangawhai Bay.

Continued on the next page.

## Te Puna and Minden

### Jack Lloyd Reserve

Known as: Jack Lloyd Reserve

See page 103 of draft RMP

350 Wairoa Road, Wairoa

Sought by the Lloyd family and Mana Whenua to honour the name of the original landowner, John (Jack) Ormsby in 1909.

### Wāhi ō Te Hakao

Known as: 109 Clarke Road

See page 123 of draft RMP

109 Clarke Road, Te Puna

Reflects cultural significance to Mana Whenua and connection to the adjacent Hakao Stream.

### Wāhi ō Te Ōturu - I'Anson

Known as: I'Anson Bush Reserve

See page 101 of draft RMP

Loop Road, Minden

Reflects cultural significance to Mana Whenua and connection to the Ōturu Stream which flows through the reserve. The I'Anson name is retained to honour the gifting of the reserve from the I'Anson family to the Queen Elizabeth II National Trust in 1989 and then to Council in 2024

### Wāhi ō Te Rangituanehu

Known as: Minden Lookout

See page 111 of draft RMP

Corner of Minden Road and Junction Road, Minden

Reflects cultural significance to Mana Whenua. 'Te Rangituanehu' means "dusk time when the sun goes down on the horizon to the west" and Pirirākau Kaumatua refer to 'Te Rangituanehu' as "old sky to the west", reminiscent of an ancient passing of time.

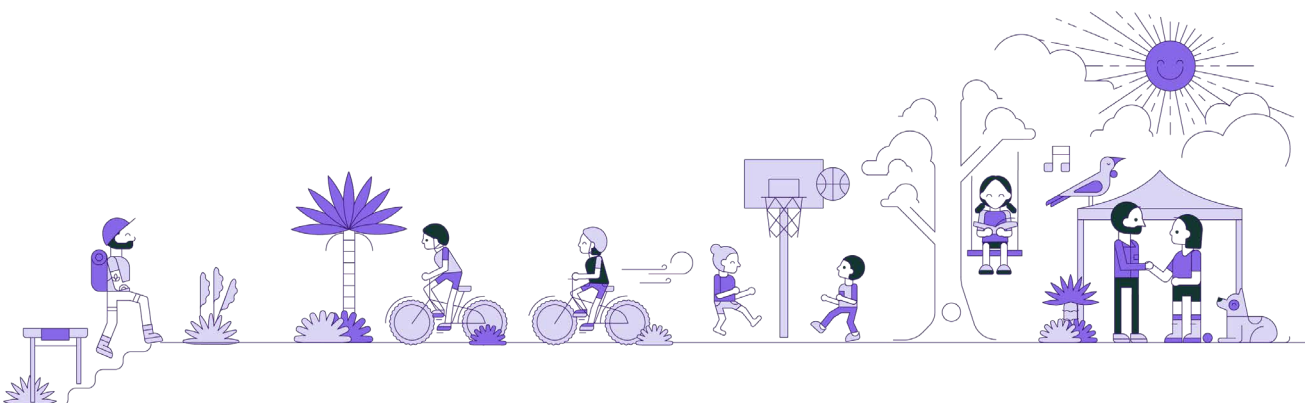
### Wāhi ō Te Tawa ki Tahataharoa

Known as: Tahataharoa Reserve

See page 126 of draft RMP

Lochhead Road, Te Puna

Reflects cultural significance to Mana Whenua and connection to the area.



# Why are we reviewing the Kaimai Ward RMP?

The Kaimai Ward RMP was last updated in 2016 and is due for its review. Council must regularly refresh its RMPs to:

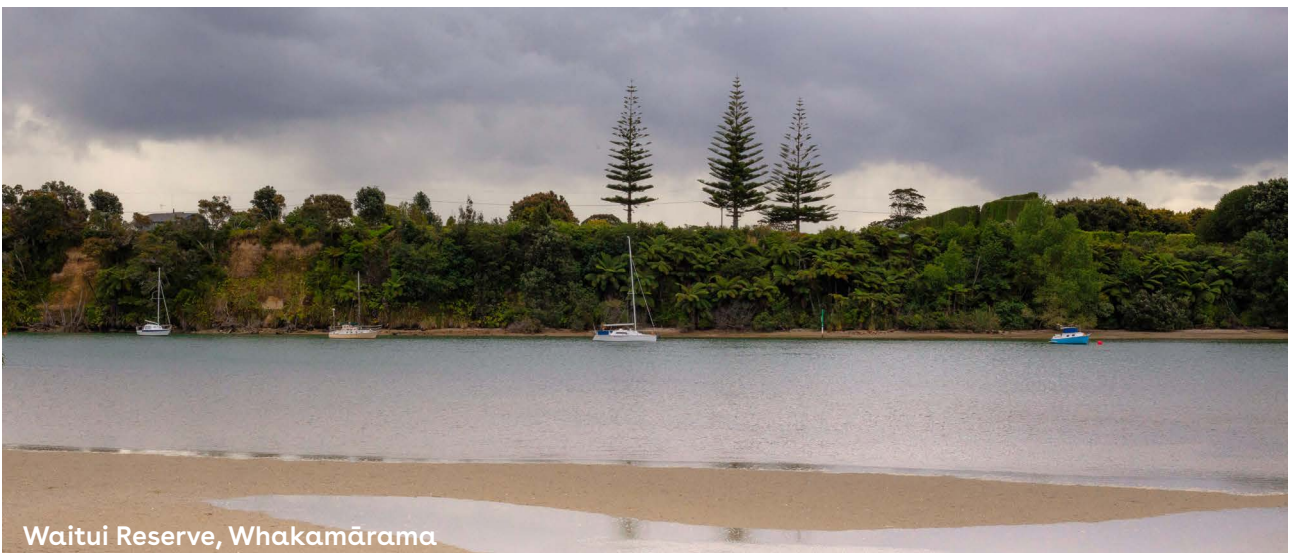
- Understand what the community wants for local parks and open spaces;
- Make sure the plan meets the needs of the district's growing and diverse population;
- Align the plan with new or updated Council rules, policies, and strategies;
- Ensure the plan matches the services the community expects; and
- Include information about new reserves and updated plans for specific areas.



Te Kopa O Te Hotu Reserve, Te Puna



Omokoroa Foreshore Reserves



Waitui Reserve, Whakamārama

# What you've told us so far

The following key insights have been identified internally by Council, through community pre-engagement, and the use of targeted engagement with tangata whenua, the Ōmokoroa Community Board and other key stakeholders.

## Cultural and historical narrative

Tangata whenua have highlighted the need to improve cultural education, recognise historical sites, and preserve local history in parks and reserves. Pirirākau hapū requested that all known cultural sites in their area be officially protected as Historic Reserves.

Council plans to work closely with tangata whenua and other community groups during the consultation on the draft Reserve Management Plan to find ways to better showcase cultural and historical stories, using signage, sculptures, or other features. Most cultural sites are already listed in the current Reserve Management Plan, but the updates will focus on how to put these ideas into action

## Reserve pest management

Around 30 community groups are helping to look after parks and reserves in the Kaimai ward by volunteering for tasks like removing harmful plants, clearing paths, and planting trees. One of their goals is to improve pest management to protect local reserves.

To help with this, a new pest management policy is being proposed for the Reserve Management Plan. This policy will build on the hard work already being done by these groups, using existing budgets and resources and will focus on the most important areas. The goal is to support the community and help New Zealand reach its aim of being Predator Free by 2050.

## Shared paths (walkways, cycleways, trails)

Thirteen pieces of feedback have suggested improvements to walking and cycling trails, particularly around the Ōmokoroa Peninsula and Mangawhai Pā Historic Reserve. Some people also want to see new connections linking Te Puna Quarry Park with the Takitimu Northern Link. The current Reserve Management Plan already aims to improve walking and cycling networks, especially to better connect important reserves like Minden Scenic Reserve and Te Puna Quarry Park.

It is proposed that the draft plan will include minor changes to reflect long-term goals, like connecting Te Puna Quarry Park to the Takitimu Northern Link, while working with tangata whenua and others to improve these trails within existing budget limits.



## Community play and recreation spaces

26 pieces of feedback highlighted the need for more play and recreation spaces, with ideas like new sports fields in Te Puna, a pétanque court in Ōmokoroa, and community gardens at McDonnell Street Reserve and Tui Glen. The Ōmokoroa Community Board has also suggested an outdoor sports court, while the Oropi Playgroup wants a swing set at the Oropi War Memorial Hall.

The proposal includes adding a new playground at Omanawa Hall, a new swing set at the Oropi War Memorial Hall, and a new sports hardcourt at Ōmokoroa Sports Ground to the draft Reserve Management Plan. In addition, Council plans to collaborate with the community to explore future opportunities for McDonnell Street Reserve and Tui Glen.

## Specific reserves

Feedback on specific reserves includes:

### 109 Clarke Road, Te Puna

Feedback on the proposed development of a new reserve at 109 Clarke Road raised concerns about safety and visibility. Tangata whenua are also interested in how the site will be used.



It's proposed that this reserve be added to the draft Reserve Management Plan, with commitment by Council to develop it in the future. Pirirākau proposes naming the reserve "Wāhi ō Te Hakao" to reflect its cultural significance and connection to the adjacent Hakao Stream. This name is part of the consultation process.

### l'Anson Bush Reserve, Minden

There were requests for improvements at l'Anson Bush Reserve, including a playground, picnic tables, and a full path for better accessibility.

It is proposed that the draft Reserve Management Plan will include ideas for future development, such as extending walkways. Pirirākau also suggests renaming the reserve "Wāhi ō Te Ōturu - l'Anson" to recognise its cultural significance and connection to the Ōturu Stream. The l'Anson name will be kept, honouring the l'Anson family's donation of the land. Formal naming is part of the consultation process.

### Te Puna Quarry Park, Minden

Feedback on Te Puna Quarry Park has suggested that more investment is needed, such as hiring a dedicated park manager, adding security, increasing plantings, and even building a new café. People also want new recreational features and better connections to other areas in Minden.

It is proposed that the updated Reserve Management Plan will include a future concept plan for the park, which could include restoring ponds, upgrading tracks, and adding an information hub. Pirirākau suggests renaming the park "Te Puna Quarry Reserve" to align with the cultural traditions of the hapū. This name is part of the consultation process.

### Wāhi ō Te Tawa ki Tahataharao, Te Puna

Feedback for this proposed reserve included a request for car parking and for the Council to work with tangata whenua to reflect the cultural identity and history of the land.



It is proposed that the reserve be added to the draft Reserve Management Plan, with the goal of creating a future concept masterplan that addresses parking and other needs. Council is also in discussions with tangata whenua about co-managing the reserve and incorporating cultural stories into its development. Pirirākau proposes naming it "Wāhi ō Te Tawa ki Tahataharao," again following their naming traditions. This name is included in the consultation process.



# Have your say

We need your feedback on the draft Kaimai Ward Reserve Management Plan by 11:59pm on Sunday 11 May. You can do this by:

**Online**, Wānanga ipurangi

Head to [yourplace.westernbay.govt.nz/draft-kaimai-rmp](https://yourplace.westernbay.govt.nz/draft-kaimai-rmp) for more information.



**Email**, ĩmēra

[yourplace@westernbay.govt.nz](mailto:yourplace@westernbay.govt.nz)

**Hard copy**, Pepa mārō

Feedback forms are available at our Library and Service Centres in Katikati, Te Puke, Ōmokoroa, and Waihi Beach, or at our Barkes Corner office.

**In person**, ā kanohi

Doggy Day Out

Ōmokoroa Sports Grounds, Ōmokoroa  
Saturday 22 March 2025  
10:00am - 1:00pm

Oropi Markets

Oropi Memorial Hall, Oropi  
Sunday 30 March 2025  
9:00am - 11:00am

Basketball 'Have a go day'

Maramatanga Park, Te Puna  
Saturday 5 April 2025  
10:00am - 12:00pm

Hearings

Tuesday 20 May 2025  
Council Head Office at Barkes Corner  
Email [yourplace@westernbay.govt.nz](mailto:yourplace@westernbay.govt.nz) before Sunday 11 May if you would like to speak to your feedback in person.

## Indicative Timeline

Community kōrero begins  
11 March 2025

Community kōrero ends  
11 May 2025

Council considers feedback  
and makes decisions  
May 2025

Kaimai Reserve Management  
Plan is amended  
June 2025

Council adopts the final  
Kaimai Ward Reserve  
Management Plan  
July 2025

## What happens next?

Feedback received from this community engagement will be presented to our Councillors with options for consideration and decisions based on this feedback.



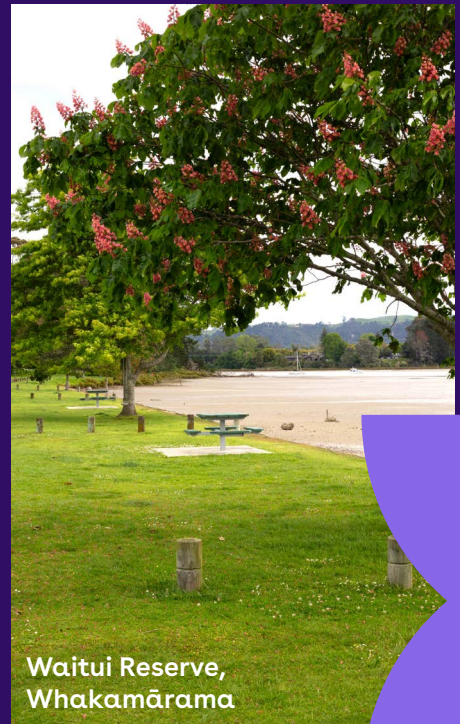


Minden Scenic Reserve, Minden

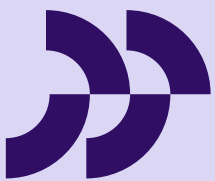
# Take a look at some of our Kaimai Ward Reserves



Precious Family Reserve, Ōmokoroa



Waitui Reserve, Whakamārama



**Western  
Bay of Plenty**  
District Council

---

Te Kaunihera a rohe mai i  
Ngā Kuri-a-Whārei ki  
Otamarakau ki te Uru

[westernbay.govt.nz](http://westernbay.govt.nz)