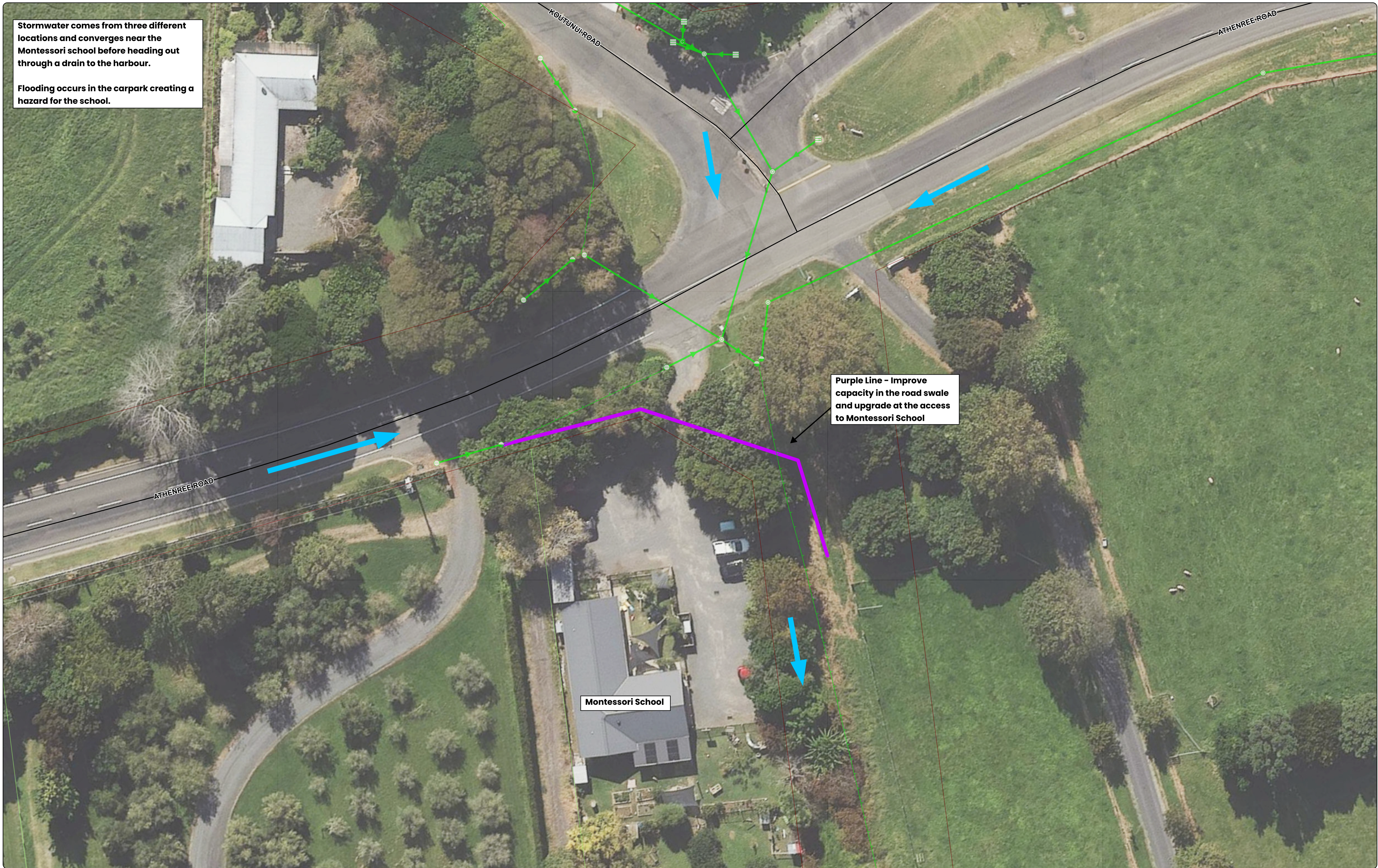


Stormwater comes from three different locations and converges near the Montessori school before heading out through a drain to the harbour.

Flooding occurs in the carpark creating a hazard for the school.



Purple Line - Improve capacity in the road swale and upgrade at the access to Montessori School

Montessori School

Produced using ArcMap by the Western Bay of Plenty District Council GIS Team.
Crown copyright reserved. LINZ digital license no. HN/352200/03 & T003522.
Location of services is indicative only. Council accepts no liability for any error.
Archaeological data supplied by NZ Archaeological Assoc./Dept. of Conservation.

Email: gis@westernbay.govt.nz
Date: 21/02/2025
Operator: sio
Map: E:\Shape\Sarah\Projects Active\Waihā Beach Stormwater\Waihā Beach Stormwater\Waihā Beach Stormwater.aprx

