

Appendix 3

Schedule of Identified Significant Historic Heritage Features

Cultural Heritage

	Item	Legal Description/Location	Significance
1.	Pa Site Opureora Ngaiterangi Iwi	Blocks 1B1, 1B3, 5, Matakana Island	One of largest and longest Pa sites
2.	Cutting Te Awakeri a Waharoa Opureora Ngaiterangi Iwi	Block 1B6A	Te Waharoa excavated a bank to drain a lagoon in order to satisfy tohunga before going into battle
3.	Pa Site Tauaroa Ngaiterangi Iwi	Block 1B8B2A	Pa site is in good condition
4.	Pa Site Pukemanuka Ngaiterangi Iwi	Block Pt 1B2B2 Pt 7, Pt 6B2B2C	Pa site is in good condition although some ditches filled in
5.	Pa Site Rangiata Ngaiterangi Iwi	Block Pt 7 Pt 9A	Pa site is in good condition
6.	Pa Site Waihirere Ngaiterangi Iwi	Block 8	
7.	Pa Site Opuhi Ngaiterangi Iwi	Block 8	
8.	Ratahi Rock Ngaiterangi Iwi		Said to be ballast of Tainui Canoe
9.	Te Umu ki Maketu Freshwater Spring Ngaiterangi Iwi	Block Pt 1A7	Included in waiata "Tamarangi", said to have been a dwelling place of taniwha
10.	Ridge Ngamata kerewhana Ngaiterangi Iwi	Pt 1A7	Ridge included in waiata "Tamarangi"
11.	Matakana or Flax Point Ngaiterangi Iwi	Pt 1C	
12.	Pa Site Tahutara Ngaiterangi Iwi	Pt 1A7	Pa site almost in original state
13.	Maramarua Pukehina Beach Ngati Whakahemo		Urupa sites
14.	Pa Site Ngati Whakahemo	Pukehina M1B3B	Highest of four Beach Pa sites
15.	Pa Site Ngati Whakahemo	Pukehina M1B3B	Original Pa site Trench sites in good condition
16.	Oreiwata Pa Site Burial Ground Reserve Pohutukawa and Karaka trees and trenches Ngati Whakahemo	Pukehina K	Burial ground for Whakahemo and Patuwai people
17.	Waiheke Pa Site Pohutukawas and trenches Ngati Whakahemo	Pukehina M1B4	

	Item	Legal Description/Location	Significance
18.	Marae Ngati Whakahemo	Pukehina M2C2A	
19.	Te Rekereke o Maruahaira Spring Ngati Whakahemo	Lot 2 DPS 774	Maruahaira was the founding Chief of Ngati Whakahemo, reported to have heeled the ground and created the spring.
20.	Te Pareoterawahiria Pa Site Ngati Whakahemo	Lot 2 DPS 774	Occupied by Muruahaira during occupancy of Pukehina
21.	Te Raupare; Beach Ngati Makino	Otamarakau 2A1B	Sandhills outside Marae: site of battlefields and burials
22.	Pa Maurea Pa Site and burial ground Ngati Makino	Waewaehikitia No 1	Burial ground of many Te Arawa
23.	Marae Ngati Makino	Otamarakau 2D3A	
24.	Ko Whitiwhiti Pa Site Ngati Whakahemo	Lot 5 DP 27227	
25.	Pukehina School Site	Sec 3 Blk III Waihi South	Land donated by Te Rangituakoha Takuirā for the education of Maori and Pakeha residents
26.	Kauri Point - Waahi Tapu Ngaiterangi Ngati Ranginui	Lot 1 DPS 14772 Lot 1 DPS 4340	
27.	Pa Site Ngai Tamawhariua	Allot 12C3	Tupuna lived on site
28.	Urupa Ngai Tamawhariua	Allot 12B	Burial ground
29.	Urupa Ngai Tamawhariua	Allot 10A	Burial ground
30.	Pa Site Ngai Tamawhariua	Allot 40	
31.	Urupa Ngai Tamawhariua	Tutaetaka Island	Burial ground
32.	Pa Site Ngai Tamawhariua	Lot 2 DPS 62746	
33.	Pa Site Ngai Tamawhariua	Allot 20B	
34.	Pa Site Ngai Tamawhariua	Allot 20C	
35.	Pa Site and Urupa Ngai Tamawhariua	Allot 75A	Burial ground
36.	Pa Site and Urupa Ngai Tamawhariua	Lot 2 DPS 27232	Burial ground
37.	Pa Site Ngai Tamawhariua	Lot 3 DPS 27232	
38.	Pa Site Ngai Tamawhariua	Lot 2 DP 23590	
39.	Pa Site Ngai Tamawhariua	Pt 4 DP 23590	
40.	Pa Site and Urupa Ngai Tamawhariua	Lot 26 DPS 41875	Burial ground
41.	Pa Site and Urupa Ngai Tamawhariua	Lot 40 DPS 41875	Burial ground
42.	Pa Site Ngai Tamawhariua	Pt Allot 5	

Item		Legal Description/Location	Significance
43.	Pa Site Ngai Tamawhariua	Pt Allot5	
44.	Urupa Ngai Tamawhariua	Lot 1 DPS 60360	Burial ground
45.	Urupa Ngai Tamawhariua	Lot 4 DPS 27462	Burial ground
46.	Urupa Ngai Tamawhariua	Lot 2 DPS 63813	Burial ground
47.	Pa Site Ngai Tamawhariua	Allot 134	
48.	Pa Site Ngai Tamawhariua	Sec 1	
49.	Pa Site and Urupa Ngai Tamawhariua	Lot 1 DPS 14472	Burial ground
50.	Pa Site Ngai Tamawhariua	Lot 2 DPS 59056	
51.	Pa Site Ngati Pukenga	Lot 4 DPS 63604	
52.	Whetu Marae Ngati Pukenga	Ngapeke 5B1A	
53.	Pa Site (Paepaekohatu) Ngati Pukenga	Ngapeke 7	
54.	Pa Site (Papa kanui) Ngati Pukenga	Ngapeke 3B2	
55.	Pa Site (Te Pa o Te Matau) Ngati Pukenga	Pt Papamoa Sec 3D2	
56.	Pa Site (Te Wharo) Ngati Pukenga	Lot 1 DPS 57397	
57.	Pa Site (Hikutawatawa) Ngati Pukenga	Pt Sec 5	
58.	Pa Site Ngati Pukenga	Sec 13	
59.	Te Arawa Memorial Whakaue		Landing site of Te Arawa waka after the great migration from Hawaik.
60.	Te Ihu o Tamatekapu Whakaue	Pt Lot 3 DPS 1104 Lot 1 DPS 24353 Lot 3 DPS 29347 Lot 2 DPS 29347 Lot 8 DPS 9783 Lot 1 DPS 14442 Lot 2 DPS 14442 Lot 3 DPS 14442 Lot 2 DPS 20614 Lot 1 DPS 10108 Lot 7 DPS 9562 Lot 2 DPS 9562 Lot 6 DPS 9562 Lot 3 DPS 8548 Pt A144 ML 15308 A1 ML 15308 Maketu	The Maketu headland or Te Ihu (the nose) of Tamatekapu, Captain of the Te Arawa Canoe. The Maori Heritage Council confirmed the registration of Te Okureitanga o Te Ihu o Tamatekapua as wahi tapu on 18 April 2012.
61.	Te Kahika Marae Tapuika	Rangiuru 2H	
62.	Tawakepito Marae Tapuika	Rangiuru 2B2BD	
63.	Hopuatamitami Ngati Tukehe Marae Tapuika	Rangiuru 2B4B2D	Burial ground
64.	Part Kenana Urupa Tapuika	Kenana 2B8B	Burial ground

	Item	Legal Description/Location	Significance
65.	Ohokino Marae Tapuika	Rangiuru 2B14B3A	Former Marae site
66.	Paetawa Urupa Tapuika	Pt Rangiuru 2B11	Burial ground
67.	Tawakepito Urupa Tapuika	Lot 2 DPS 31875	Former burial ground
68.	Ngati Moko (Waitangi) Marae Tapuika	Rangiuru 1A10B	
69.	Tuhourangi Marae Tapuika	Pukaingataru B31B1B3	
70.	Ngati Marukukere (Te Paamu) Marae Tapuika	Pt Rangiuru 2A3	
71.	Ngati Kuri (Te Matai) Marae Tapuika	Rangiuru 2A5	
72.	Te Eka o Te Rangi Urupa Tapuika	Rangiuru 2A6	Burial ground
73.	Kenana (old) Urupa Tapuika	Pt Rangiuru 1A13	Burial ground
74.	Kenana (new) Urupa Tapuika	Lot 1 DP 12549	Burial ground
75.	Pa Site (Kenana) Tapuika	Rangiuru 2B9	Former Pa
76.	Whakaue Marae Whakaue	Maketu A88F	
77.	Pa Site Tapuika	Pt Rangiuru 2D2	
78.	Pa Site Tapuika	Pt Sec 8	
79.	Hei Marae Waitaha	Te Puke 1E	
80.	Haraki Marae Ngati Rangiwewehi	Te Puke 1A4A	
81.	Te Awhe Marae	Maketu A150	
82.	Puketoki Pa Site Ngati Ranginui Te Whanau a Tauwhao	Pt Lot 2 DP 32351	Former Pa
83.	Kauri Point Pa Site Ngati Ranginui Ngaiterangi	Lot 1 DPS 14472	Former Pa
84.	Hikurangi Ngati Ranginui	Sec 17 SO 25800	Sacred Mountain
85.	Te Kura a Maia Pa Site Ngati Ranginui Te Whanau a Tauwhao	Sec 26 SO 26696	Former Pa
86.	Koutunui Pa Ngati Ranginui Te Whanau a Tauwhao and middens	Lot 2 DPS 57503	Pa and middens
87.	Otawhiwhi Pa Site Ngati Ranginui Te Whanau a Tauwhao	Sec 25 SO 26696	Former Pa
88.	Tangitu Urupa Ngati Ranginui	Kaimai-Mamaku Conservation Park	Burial ground
89.	Te Atua Kahe Pa Site Ngati Ranginui	Lot 3 DPS 12390	Former Pa
90.	Waihuri Pa Site Ngati Ranginui	Lot 1 DPS 27731	Former Pa
91.	Ongarahu Pa Site Ngati Ranginui	Lot 4 DP 9288	Former Pa

Item	Legal Description/Location	Significance	
92	Huharua Pa Site Ngati Ranginui	Station Road Omokoroa Road Reserve	Former Pa
93	Wilson Road Cultural site	Wilson Road, Lot 1 DPS 41958 and Lot 2 DPS 31407	Cultural Heritage site, Wahi Tapu Archaeological
95	Wilson Road Cultural Site	Lot 1 DPS 75392	Cultural Heritage site, Wahi Tapu Archaeological
96	Angus Lane Cultural site	Lot 2 DPS 31408 and Lot 6 DPS 49969	Cultural Heritage site, Wahi Tapu Archaeological
97	Citrus Avenue Cultural site	Lot 4 DP 314163, Lot 2 DPS 66013 and Lot 2 DPS 37336	Cultural Heritage site, Wahi Tapu Archaeological
100	Pa Site Pirirakau/Ngati Ranginui	Lot 180 DP 367979	Former Pa
101	Pa site (Pohutukawa Drive, Athenree)	Lot 1 DPS 27596	Pa
102	Bowentown	Lot 2 DPS 75873	Archeological landscape containing pa and middens
103	Kauri Point	Allot 134, 137 Tahawai Parish Sec 1 BLK VI Katikati SD	Archeological landscape containing pa and surrounding areas
104	Pukemanaka Pa	Lots 3 & 4 DPS 64672, and Lot 3 DPS 55786	Pa also known as Te Hopuni Pa
105	Tuapiro Point	Lot 33 DPS 41877, SO 61641	Archeological landscape containing middens and 'finds'
106	Ongare Point Pa U13/8	Pt Allot 5 SO 1765	A large fortified pa with ditch and bank defenses.
107	Tawhitinui Pa Gunfighter Pa U14/160	Lot 5 DPS 44151 Allot 44 SO 17268	Hill top pa surrounded by ditches and interconnected pits.
108	Te Irihanga Pa U14/328	Irihanga 2 ML 5321	Hill top pa with ring ditch fortification.
109	Bridge Embankment T13/341	Lot 198 DP 369442 Sec 4 SO 23764 Sec 4 SO 25382	Bridge embankment on former ECMT.
110	Te Wharo Pa U14/166	Lot 3 DPS 80763 Pt 2 Sec 5B ML12560	A ridge and headland pa site constructed along the rim of a volcanic crater.
111	Te Wharo Pa U14/167	Lot 1 DPS 90694	A ridge and headland pa site constructed along the rim of a volcanic crater.
112	Maungarangi Pa U14/234	Lot 3 DPS 86405	Headland pa with trench and parapet.
113	Te Inahi Pa U14/244	Lot 9 DP 367866	Small pa sheltered by surrounding hills comprising a defended knoll and ditch.
114	Papamoa Hills Regional Park	Lot 2 DP 345423 Lot 5 DP 309001 Sec 2 SO 315254 Sec 1 SO 315254	A continuous archaeological and cultural landscape of national significance as there are few examples of historical occupation of such complexity in such a relatively small area.
115	Owhara Pa Herekaki Pa V14/2 V14/10	Pt Maketu A 144 ML 15308 Pt Maketu A126 ML 15308 Maketu A 127 ML 15308 Sec 1 SO 32090	Owhara Pa - large pa site with large central platform with ditch and bank defenses. Herekaki Pa - small headland pa.

Item	Legal Description/Location	Significance	
116	Pukemaire Pa Fort Colville V14/6	Maketu A121 ML 15308 Maketu A131 ML 15308 Pt Maketu A144 ML 15308	Pa site roughly triangular in shape with two sides along steep gullies and protected by a ditch on the third side. Located in a strategic location overlooking the Maketu Estuary. Converted to a redoubt under Major Colville during occupation of Maketu.
117	Pukepoto Pa V14/13	Maketu A151 ML 13508 Pt Maketu A51 Maketu A49 ML 15308	Pa with several terraces and two transverse ditches diving pa into two main platforms.
118	Okurei Pa V14/22	Pt Maketu A144 ML 15308	Headland pa with ditch and bank system providing deep defensive trench.
119	Scarp/Pit V14/23	Pt Maketu A144 ML 15308	Possibly an outer defense for Okurei Pa.
120	Pa Site V14/24	Pt Maketu A144 ML 15308	Large pa extending along cliffs.
121	Tirotirowhetu Pa V14/25	Pt Maketu A144 ML 15308	Pa extending along cliffs connected to another pa by a scarp.
122	Pa Site V14/26	Pt Maketu A144 ML 15308	Pa with steep scarp, ditch and bank.
123	Pa Site V14/31	Pt Maketu A144 ML 15308	Pa located on cliffs with a bank and ditch surrounding a large platform divided into two.
124	Pukehina Pa/Redoubt V14/3	Pukehina M1B3 ML20373	Very large pa extending along the coastal cliffs south-east of Pukehina with defensive ditch.
125	Waeheke Pa Karamurumu Pa V14/5	Pukehina M1B4 ML20373	Pa defended by an outer ditch. Rifle pits were dug when converted into a gunfighter pa.

Explanatory Note: For Cultural Heritage Features 106-113 and 115-125 the identified site boundaries only represent a portion of the full extent of the archaeological site as recorded by the NZAA and administered by the NZHPT.

Built Heritage

Item	Legal Description/Location	Significance
1. St Peters (Anglican) Church Katikati (Category A) NZHPT Reg. Number: 5413 (Category II)	Pt DP 652	Built 1884 gothic style features, stained glass and wooden moulden. First Anglican Church built in Katikati.
2. Katikati Library (former) (Category A) NZHPT Reg. Number: 5415 (Category II)	On Uretara Domain Lot 19 DP 67 BLK IX Katikati SD	Recognised by the NZ Historic Places Trust as a Category II building. Good example of a simple box cottage.
3. Katikati No 2 School Building (Category A) NZHPT Reg. Number: 5409 (Category II)	Pt Allot 72 Tahawai Parish, Beach Road	1879 first classroom built. Has potential for archaeological investigation.
4. Homewood Estate Katikati (Category A) NZHPT Reg. Number: 5411 (Category II)	Lot 3 DPS 22212 Blk IXX Katikati SC Pukekura Road Katikati	Built 1876 by Dr Thomas Fletcher. Representative example of a surviving 1870s homestead in the <i>District</i> .
5. Uretara Domain WW1 Memorial Gates Katikati (Category A)	Uretara Domain Major Street	Built 1920 in memory of local men who died in World War I.
6. George Vesey Stewart Memorial Katikati (Category A) NZHPT Reg. Number: 7124 (Category II)	Uretara Domain	A memorial to founder of both Katikati and Te Puke. Category A, Historic Places Act 1993.
7. Hera Memorial Gates Te Puke (Category A)	Jamieson Oval, Commerce Lane	Rare form of commemorative monument. Part of the original Jellicoe streetscape.
8. Te Puke School War Memorial Gates (Category A)	Litt Park, Cameron Road	Associated with the development of the No. 1 school site. Forms part of an historic area along with the dental clinic and large puriri tree.
9. Former Waitekohe No 3 School Building (Category A)	Lot 1 DPS 58485 Cnr Walker Road East/State Highway 2	Representative example of an 1880s school building. Associated with the development of education in the <i>District</i> .
10. St Thomas (Anglican) Church Maketu (Category A) NZHPT Reg. Number: 777 (Category II)	Maketu A130	One of the first Anglican churches in the Bay of Plenty and associated with the CMS Mission at Maketu Cruciform shape uncommon in Anglican churches from this period.
11. St Peters (Catholic) Church Maketu (Category A) NZHPT Reg. Number: 776 (Category II)	Maketu A77	Early form of simple church building. No nails used in construction. Pre-dates 1900.
12. St Johns (Anglican) Church Te Puke (Category A)	Lot 2 DPS 39498	Representative example of early 20th century churches. Associated with development of the Anglican church in the <i>District</i> .

Item	Legal Description/Location	Significance	
13.	Hingston House No 2 Road	Sec 12, 12A, 59-61, Pt 3 Blk IX Maketu	
14.	Glenavon House Te Puke (Category A)	Lot 23 DP 8143 2 Malyon Street	Representative early type of Victorian transitional villas. Associated with private maternity hospital run by local identity, Sarah Malyon.
15.	Constables Art Gallery and Jail Te Puke (Category A)	Commerce Lane	Representative example of early form of Police Station and Courthouse. Associated with the development of law and order in the <i>District</i> .
16.	Twickenham Homestead Katikati (Category A)	Pt 2 DPS 30860 3 Mulgan Street	Representative example of a typical 1870s homestead. Associated with early settlement of Katikati.
17.	McLaren Falls Power Station	Allot 710 Te Papa Parish	
18.	Omanawa Falls Power Station	Lot 1 DP 9149	
19.	Trestle Railway Bridge on Railway Line Aongatete		
20.	Lockington Homestead (Greenhills) (Category A)	Lot 1 DP 429150 11A Highfields Drive, Katikati	Of local significance. Lockington Homestead built 1878. Representative of an early Victorian homestead.
21.	Kelly Homestead	Lot 6 DPS 49109 Oropi	Of local significance. Built 1876 - homestead of Hon. William Kelly, Member of Central Parliament and Legislative Council.
22.	Athenree Homestead (Category A)	Lot 2 DPS 40567	Historic homestead and grounds.
23.	Talisman Hotel (Category A)	Pt Lot 2 and Lot 3 DPS 84194 Main and Beach Rd, Katikati	A 1930s hotel building with stylistic features reminiscent of hotels from the 1900s.
24.	Uretara Domain (Category B)	Lot 19 DP 67 Blk IX Katikati SD (CT 30D, 34 and 35: South Auckland) Major Street, Katikati	Associated with the development of recreational activities in Katikati and the early development of the township.
25.	Katikati War Memorial Hall (Category B)	Pt Lot 3 DP 28541, Pt Allot 86 Tahawai 29-31 Main Road, Katikati	A memorial associated with local partition in WWI. Local and regional heritage significance.
26.	Farmer's Building (former) (Category B)	Lot 1 DP 308158 11-15 Main Road, Katikati	Representative example of 1910s store and warehouse. Part of historic Katikati streetscape. Associated with Pioneer Store and the Johnstone family.
27.	St Pauls (Presbyterian) Church (Category B)	Lot 1 DP 67 2 Mulgan St, Katikati	First Presbyterian church built in Katikati.
28.	Gilbert's "Old Mill" Store (Category B)	Lot 175 DP 67 Katikati 30 Waterford Street, Katikati	One of the early buildings in Katikati (as Gilbert's Store). Pre-1900 building. An archaeological site under Historic Places Act 1993.
29.	Capitol Theatre (Category A)	Pt Lot 24 DP 286 Jellicoe Street, Te Puke	Important feature of 1930s streetscape. Once had biggest stage and movie screen in Southern Hemisphere.

Item	Legal Description/Location	Significance	
30.	Te Puke Hotel (Montgomery's) (Category A)	Pt Lot 2 DP 14252 Jellicoe Street, Te Puke	Only surviving hotel associated with the historical development of accommodation houses in Te Puke. Late Victorian architectural style.
31.	Former Union Bank building (Category A)	Lot 1 DPS 3511 2 Boucher Ave, Te Puke	Rare surviving form of 1910s timber bank building. Associated with Union Bank and Te Puke Historic Streetscape.
32.	Te Puke War Memorial Hall (Category B)	Pt Lot 1 DP 13811 Jellicoe Street, Te Puke	Former site of first cheese factory (1884) and Mission Hall (1895). Example of 1950s civic architecture.
33.	Mayfair Ice Cream Parlour (Category B)	Pt Lot 24 DP 286 Jellicoe Street, Te Puke	Site of possible pre-1900 dwelling that was converted into a Billiard Hall (1902).
34.	King's Building (R. King Drapery) (Category B)	Lot 1 DPS 68027 73 Jellicoe Street, Te Puke	Representative of 1910s concrete building with prominent façade. Associated with Robert King.
35.	Attril's Building (Category B)	Lot 2 DP14253 106 Jellicoe Street, Te Puke	Representative example of 1910s store building and part of 1910 Te Puke streetscape. Attril was a local identity.
36.	Empire Buildings (Premier Cash Drapery) (Category B)	Pt Lot 3 DP 286, Lots 1-2 DPS 2206 93-97 Jellicoe Street, Te Puke	Representative example of 1920s style department store building. Associated with historic Te Puke streetscape.
37.	McGregors Wholesale Liquor (Category B)	Lots 2 DP 14161, Lot 3 DP 13815 Lot 2 DPS 62574 120 Jellicoe Street, Te Puke	Representative of 1930s style of commercial building. Site of Kerr's Blacksmiths (1898-1930s).
38.	Securities Building (Category B)	Lot 1 DPS 62574 Jellicoe Street, Te Puke	Representative example of classical façade. One of a few left in Te Puke.
39.	Landscape Road Timber Bridge (Category B)	Road Reserve (Landscape Rd) Landscape Road, Te Puke	Nationally rare form of timber bridge which pre-dates 1900 and once formed part of the main road through Te Puke.
40.	No 2 Road Hall (Category A)	Pt Sec 17 DP 1198 262 No 2 Road, Te Puke	The first public hall in the district built in 1882. Early form of timber community hall and church building with substantially intact kauri interior.
41.	Old Te Puke Cemetery (Category B)	Pt Sec 22 Blk II Maketu SD Te Puke	Includes pre-1900 gravestones which contain significant social and stylistic information. Contains the graves of many early settlers.

Item	Legal Description/Location	Significance
42. St Andrew's (Presbyterian) Church (Category B)	Lots 9-10 DP 6908 Te Puke	Representative of timber church buildings from the early 20th century. Associated with the development of the Presbyterian parish in the District.
43. Te Puke Nurses Home (former) (Category B)	Lot 2 DP 27157 Leniham Drive, Te Puke	Representative of 1920s/1930s public nurses' homes. Important part of the development of medicinal practice in Te Puke.
44. Olive Tree, Jubilee Park (Category B)	Pt Sec 21 DP 16726 Jubilee Park, Te Puke	Commemorative value as a memorial to the Battle of Crete during WW2.
45. Te Puke Masonic Lodge (Category B)	Lot 56 DP 6908 Te Puke	Rare example of a timber lodge building. Associated with the formation of the Masonic Society in Te Puke.
46. Wharekahu Cemetery (Category A)	Pt Section 1 Blk IV Maketu Spencer Ave, Maketu	Pre-1900 site with significant social archaeological information on the headstones. Contains headstones of important local identities.
47. Wharekahu Mission Historic Area (Category A)	Spencer Ave and adjacent properties Maketu	The area is associated with the Wharekahu Mission, one of the first European settlements in the Bay of Plenty.
48. Dwelling (former Maketu Police House) (Category B)	Lot 2 DPS 31493 62 Spencer Ave, Maketu	The police station predates 1900 and is representative of typical 1880s-1920s civic buildings.
49. European Trees (Ivy Isles site) (Category B)	Lot 2 DP 39793 Spencer Ave, Maketu	Site contains remnants of a house built in 1883. It is one of few archaeological sites in the <i>District</i> .
50. Otairoa Trading Station (Historic Area) (Category B)	Park Road and adjacent properties Maketu	This area has the potential to contain subsurface remains of the early commercial centre of Maketu.
51. Waihi Beach Playcentre (Category B)	Pt Lot 2 DP 22757 100 Beach Rd, Waihi Beach	Oldest school in the Waihi Beach area.
52. Brighton Reserve War Memorial (Category B)	Lot 60 DP 26781 Savage St, Waihi Beach	Original war memorial for the Waihi Beach area.
53. Former Omokoroa Settlers Hall (Category B)	Pt Allot 247 Te Puna 334 Omokoroa Road	Has served as a community hall since 1950. Associated with Cyril Gane and the construction of the ECMT railway in the 1920s.
54. Gerald Crapp Historic Reserve (Category A)	Lot 1 DPS 27731 Myrtle Drive, Omokoroa	Associated with the early European settlement of Omokoroa Point. Potential for subsurface remains of the Gellibrand/Crapp Homesteads and historic occupation of the area.

Item	Legal Description/Location	Significance
55.	Walnut Grove (Category B) Lot 25 DPS 15787 Myrtle Drive, Omokoroa	Associated with the planting of specimen plantations, orchards and gardens by J.T Gellibrand and Arthur Crapp from the 1870s.
56.	Francis Family Homestead (Category B) Lot 3 DPS 10643 4 Francis Road, Omokoroa	Associated with early 20 th century farming the <i>District</i> . One of the last remaining farm houses from the early part of the 20 th century.
57.	Francis Family Cowshed (Category B) Lot 3 DPS 10643 4 Francis Road, Omokoroa	First milking shed in the <i>District</i> . Increasingly rare type of building.
58.	Te Kotukutuku School House (Category A) NZHPT Reg. Number: 7768 (Category 1) SECT 1 BLK II Tauranga Land District Opureora Road, Matakana Island	A rare example of a native school in good condition that was established from local initiative and remains important to the local community of Matakana.
59	Bridge (Category B) Lots 3 & 4 DPS 80226, and Sec 1 SO 350785	Rail bridge on former ECMT.
60	Bridge (Category B) T13/339	Bridge on former ECMT.
61	Bridge (Category B) T13/340	Bridge on former ECMT.
62	Bridge (Category B) T14/602	Bridge on former ECMT.
63	Bridge (Category B) T14/633	Bridge on former ECMT.
64	Bridge (Category B) T14/634	Bridge on former ECMT.
65	Bridge (Category B) U14/3100	Bridge on former ECMT.
66	Bridge <u>and Embankment</u> T13/341 <u>Lot 198 DP 369442</u> Sec 4 SO 23764 <u>Sec 4 SO 25382</u>	Bridge <u>and embankment</u> on former ECMT.

Trees

Category 1: These trees are of such significance that their preservation is regarded as being of national importance.

Item	Legal Description	Significance
1.	Liriodendron tulipifera Pt Lot 1 DPS 4767 50A Moehau Street, Te Puke	Thought to be older than original Anglican Vicarage built 1904 on site.
2.	Vitex Lucens (Puriri) - stand of trees Jellicoe Street Medians	Planted as memorial to local lives lost in WWI
3.	Various Sequoia sempervirens (Redwood) Sedgemoor Lane, Katikati - Lot 2 DPS 70523 - Lot 2 DPS 89802 - Lot 1 DPS 57030 - Lot 2 DPS 56390	Planted by Mr G Tetley 1940. Good healthy stand of trees.
5.	Vitex lucens (Puriri) State Highway 2 Waterford	Planted to commemorate service to the District by William John Gray 1878-1930.
6.	Araucaria heterophylla (Norfolk Is Pine) Lot 391A Te Papa Parish Oropi School, Oropi	On site of original Oropi Hotel. Adjacent to former well, now sump in school grounds.

Category 2: These trees are of such significance that their preservation is regarded as being of either regional or particular local importance.

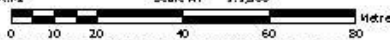
Item	Legal Description
7.	Cunninghamia lanceolata (China fir) King Street Part Lot 3 DP 33093
8.	2 Vitex Lucens (Puriri) 71 Cameron Road Pt Lot 17 DPS 10177 Flats 6 on DPS 32019
9.	Cinnaminum camphora (Camphor Tree) 4 Oroua Street Lot 23 DP 8178
10.	Metasequoia glyptostroboides Ulmus procera (7) Platanus x hispanica (4) Sequoia sempervirens Sequoiadendron giganteum Cedrus atlantica 'glauca' Quercus robur (2) Castanea sativa (2) Cedrus deodora Fagus sylvatica
11.	Fraxinus excelsior 'Raywoodii' (3) Liquidambar styraciflua (11) Melia azedarach Cedrus deodora Pittosporum euqenoides (4) Metasequoia glyptostroboides Acer nequundo (2) Liriodendron tulifera Quercus - mixed species of Q.robur, Q.coccinea, Q.rubra and Q.palustris (11) Mulberry 'Alba' (3) Albizia julibrissin (2) Podocarpus totara (10) Jacaranda

Item		Legal Description
12.	Chestnuts (2)	151 Wilson Road South DPS 9276
13.	Quercus robur	Road Reserve adjoining 46-54 Koutunui Road Lot 2 DPS 3273



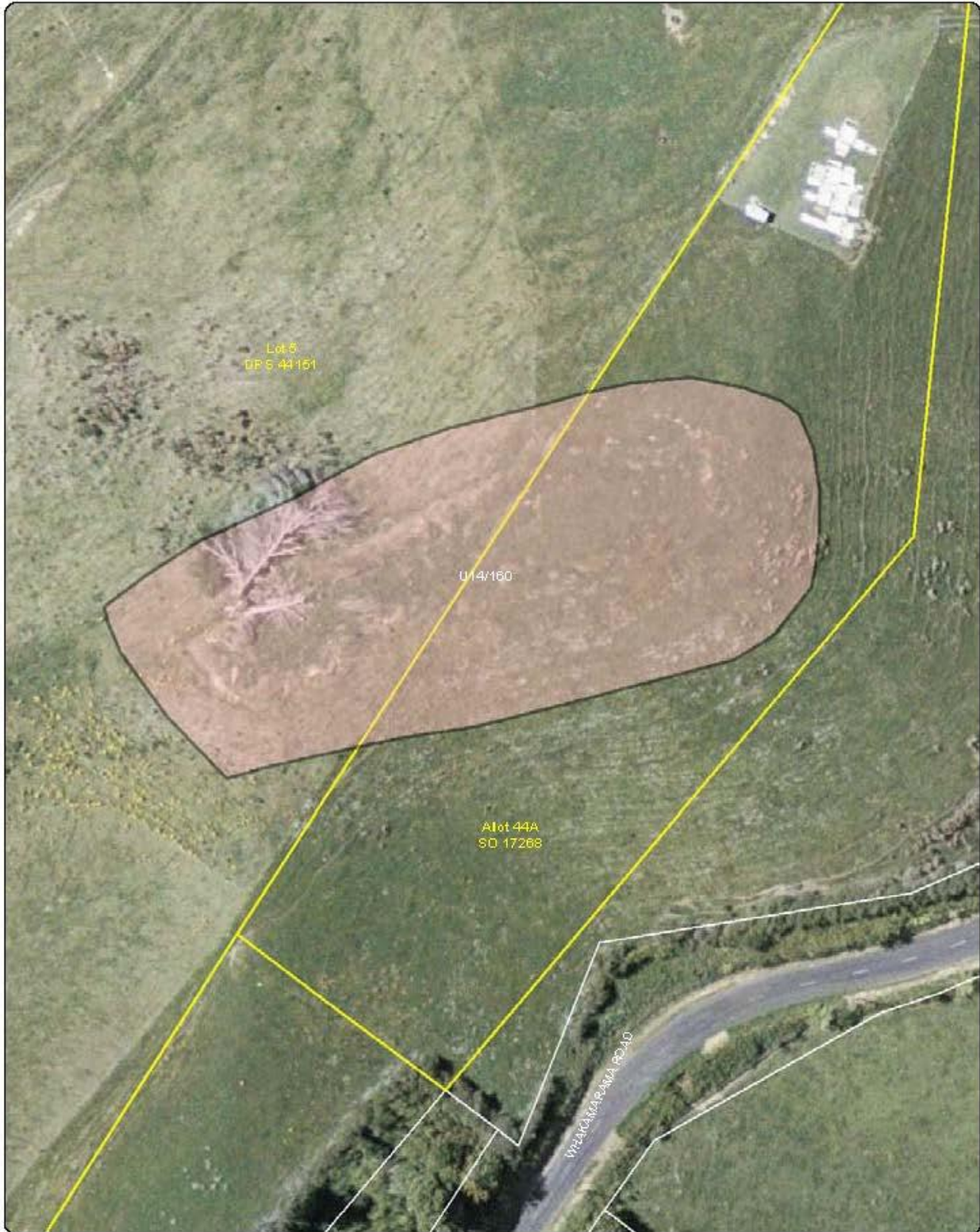
Produced using ArcMap by the Western Bay of Plenty District Council GIS Team.
 Crown copyright reserved. LINZ digital license no. H435220Q (B, T, D) 522.
 Location of services is indicative only. Council accepts no liability for any error.
 Archaeological data supplied by NZ Archaeological Assoc./Dept. of Conservation.

Email: gis@westernbay.govt.nz Scale M - 1:1,500
 Date: 22/11/2012
 Operator: mlb
 Map: E:\Shape\DistrictPlan\District Plan - Plan Changes-kew Format\Cultural Heritage



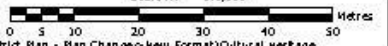

DISTRICT PLAN
CULTURAL HERITAGE FEATURE 106
ONGARE POINT PA





Produced using ArcMap by the Western Bay of Plenty District Council GIS Team.
 Crown copyright reserved. LINZ digital license no. H4/35220Q/08/8.T00/8/522.
 Location of services is indicative only. Council accepts no liability for any error.
 Archaeological data supplied by NZ Archaeological Assoc./Dept. of Conservation.

Email: gis@westernbay.govt.nz Scale A4 - 1:1,000
 Date: 22/11/2012
 Operator: mlb
 Map: E:\Shape\DistrictPlan\District Plan - Plan Changes-New Format\Cultural Heritage




**DISTRICT PLAN
 CULTURAL HERITAGE FEATURE 107
 TAWHITINUI PA**

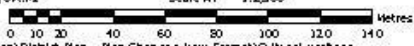




Produced using ArcMap by the Western Bay of Plenty District Council GIS Team.
Crown copyright reserved. LINZ digital license no. H/35220QB B, TDOB 522.
Location of services is indicative only. Council accepts no liability for any error.
Archaeological data supplied by NZ Archaeological Assoc./Dept. of Conservation.

Email: gis@westernbay.govt.nz
Date: 22/11/2012
Operator: mlb
Map: E:\Shape\DistrictPlan\District Plan - Plan Changes-New Format\Cultural heritage

Scale A4 - 1:2,500

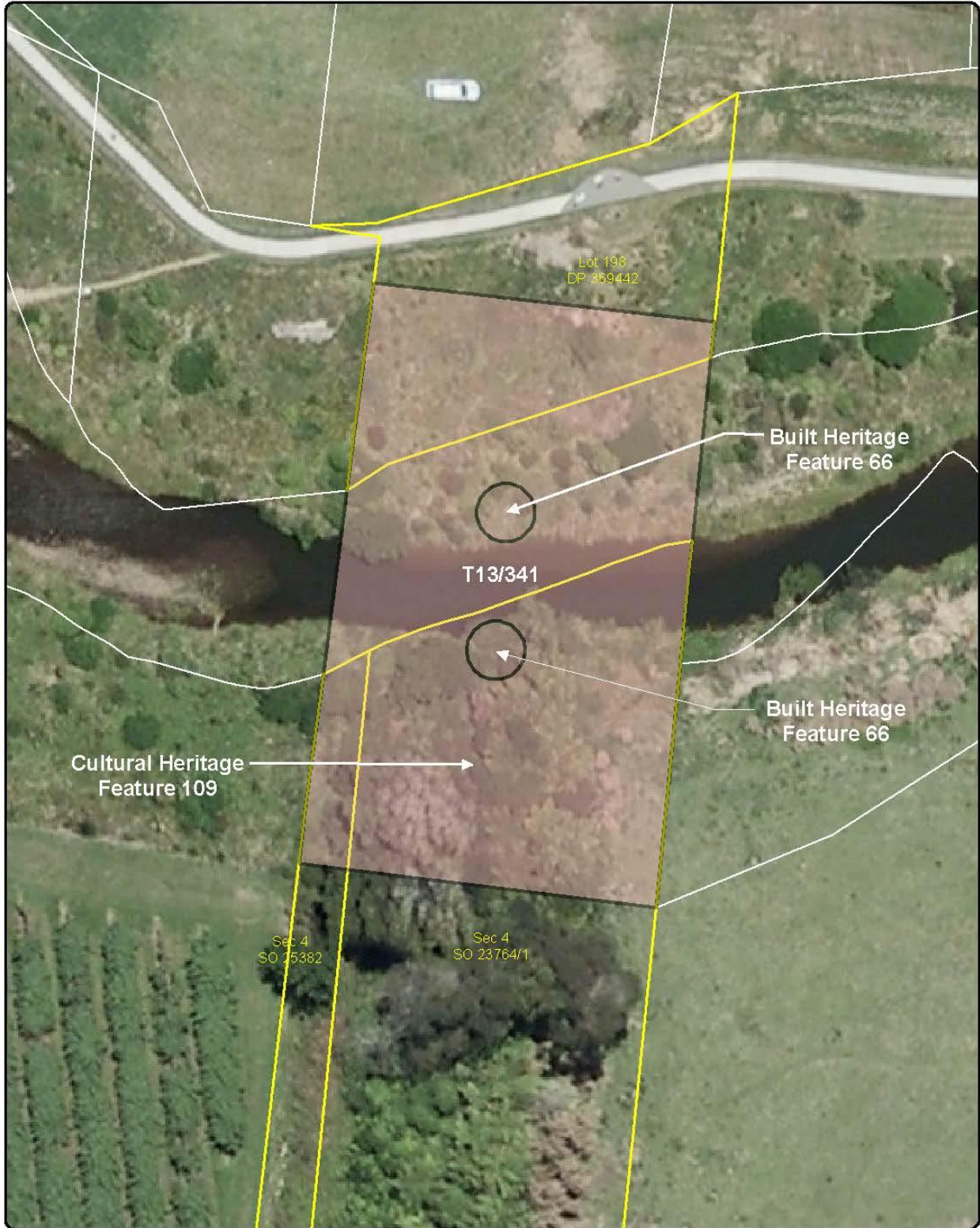


0 10 20 40 60 80 100 120 140 Metres



DISTRICT PLAN
CULTURAL HERITAGE FEATURE 108
TE IRIHANGA PA



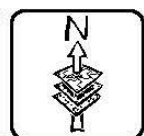


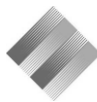
Produced using ArcMap by the Western Bay of Plenty District Council GIS Team.
 Crown copyright reserved. LINZ digital license no. HN/352200/03 & TD093522.
 Location of services is indicative only. Council accepts no liability for any error.
 Archaeological data supplied by NZ Archaeological Assoc./Dept. of Conservation.

Email: gis@westernbay.govt.nz Scale A4 - 1:500
 Date: 13/06/2013
 Operator: mlb
 Map: E:\Shape\District\Plan\District Plan - Plan Changes-New Format\Cultural Heritage



**DISTRICT PLAN
 CULTURAL HERITAGE FEATURE 109
 BRIDGE EMBANKMENT**





Produced using ArcMap by the Western Bay of Plenty District Council GIS Team.
 Crown copyright reserved. U14Z original license no. W4/352209 QB 8, TDO#522.
 Location of services is indicative only. Council accepts no liability for any error.
 Archaeological data supplied by NZ Archaeological Assoc./Dept. of Conservation.

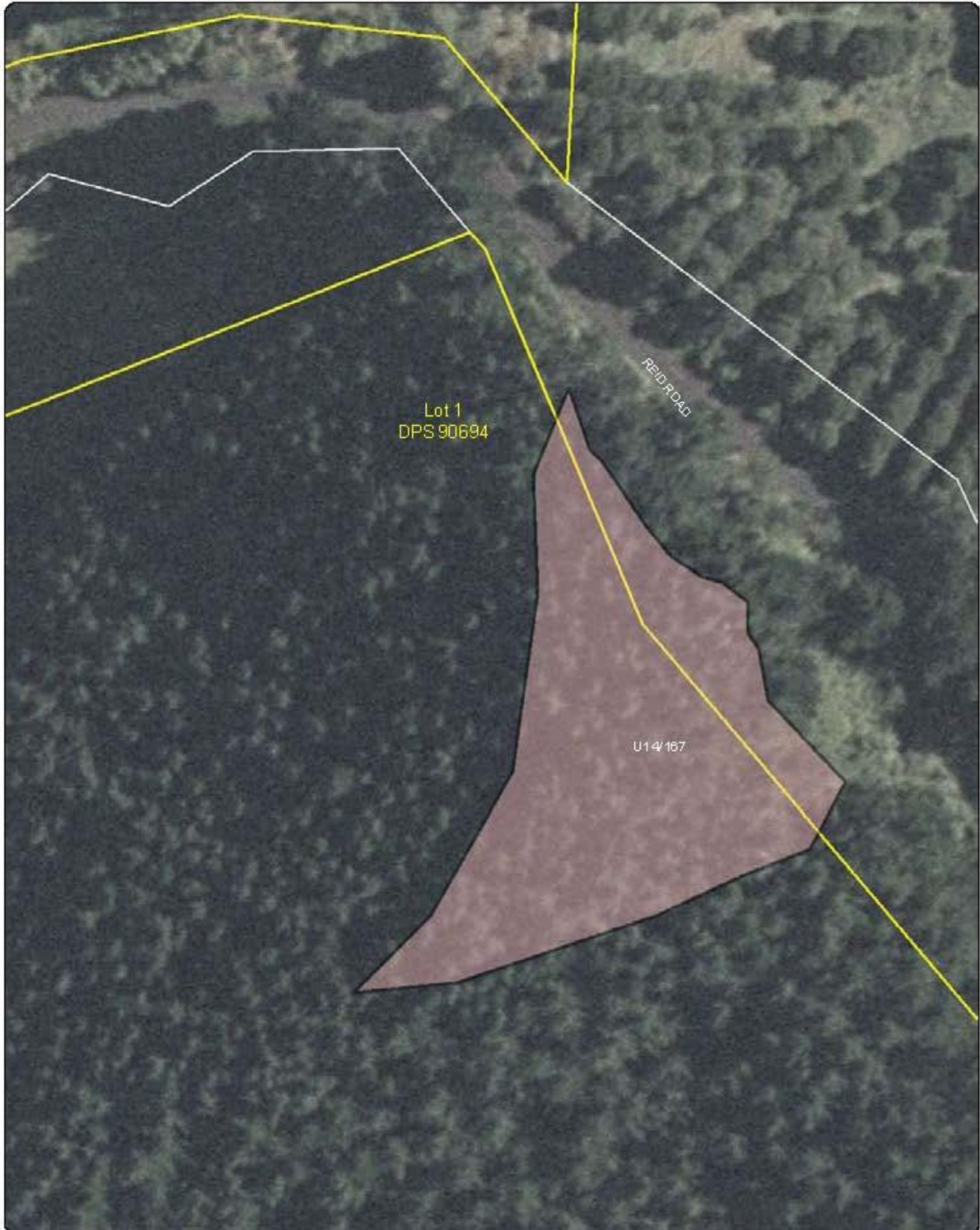
Email: gis@westernbay.govt.nz
 Date: 23/11/2012
 Operator: mib
 Map: E:\Shape\DistrictPlan\District Plan - Plan Changes-new Format\Cultural Heritage

Scale A1 - 1:2,100



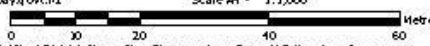
**DISTRICT PLAN
 CULTURAL HERITAGE FEATURE 110
 TE WHARO PA**



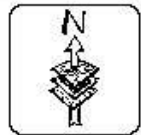


Produced using ArcMap by the Western Bay of Plenty District Council GIS Team.
 Crown copyright reserved. U.K. Intellectual Property License no. H4/35220/Q/B. B.TD08/322.
 Location of services is indicative only. Council accepts no liability for any error.
 Archaeological data supplied by NZ Archaeological Assoc./Dept. of Conservation.

Email: gis@westernbay.govt.nz Scale M - 1:1,000
 Date: 23/11/2012
 Operator: mlb
 Map: E:\Shape\DistrictPlan\District Plan - Plan Changes-New Format\Cultural Heritage



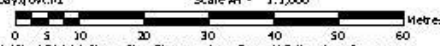

**DISTRICT PLAN
 CULTURAL HERITAGE FEATURE 111
 TE WHARO PA**



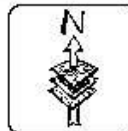


Produced using ArcMap by the Western Bay of Plenty District Council GIS Team.
 Crown copyright reserved. UNZ010101 license no. H435220QB B.7009522.
 Location of services is indicative only. Council accepts no liability for any error.
 Archaeological data supplied by NZ Archaeological Assoc./Dept. of Conservation.

Email: gis@westernbay.govt.nz Scale A4 - 1:1,000
 Date: 22/11/2012
 Operator: mlb
 Map: E:\Shape\DistrictPlan\District Plan - Plan Changes-New Format\Cultural Heritage




**DISTRICT PLAN
 CULTURAL HERITAGE FEATURE 112
 MAUNGARANGI PA**





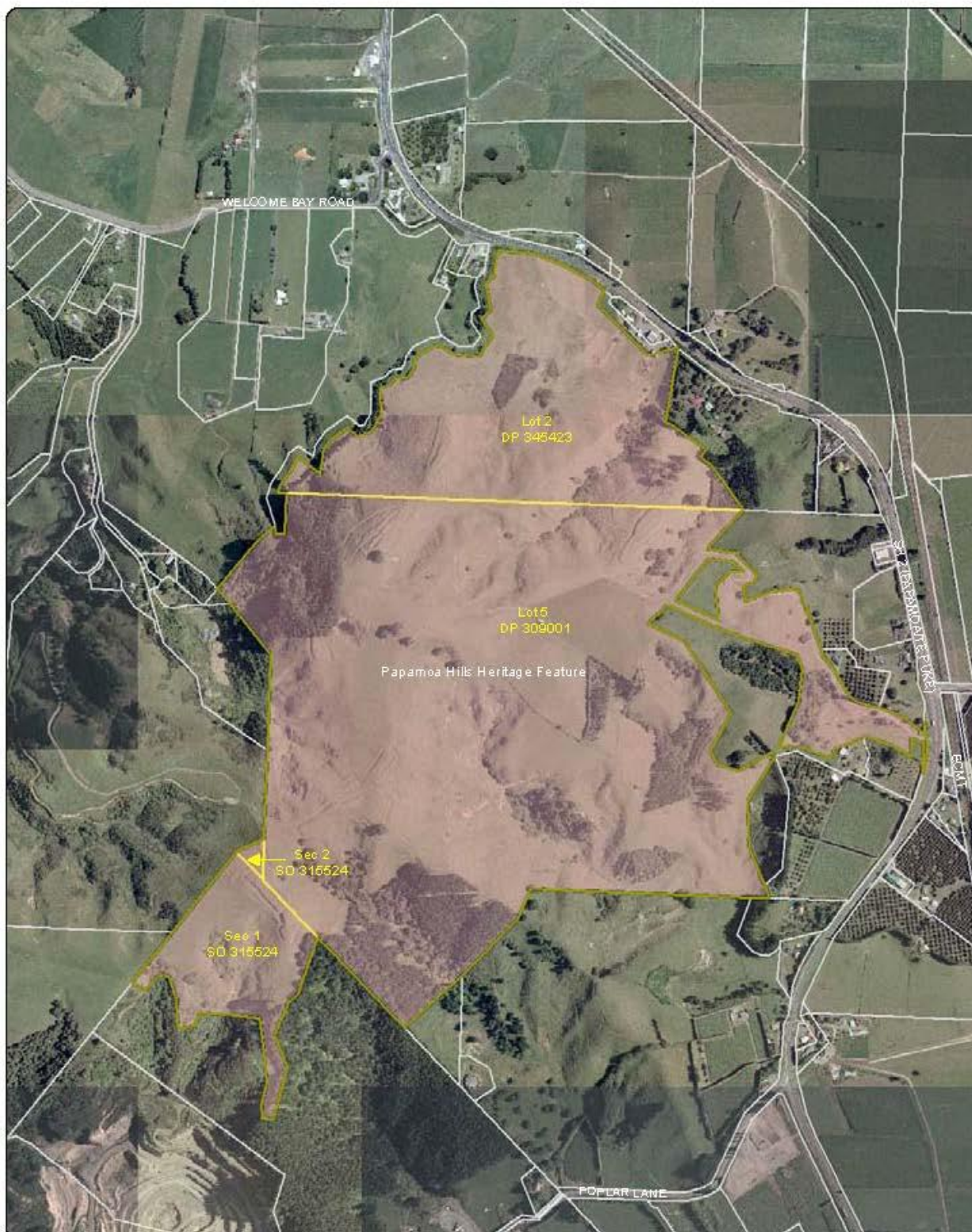
Produced using ArcMap by the Western Bay of Plenty District Council GIS Team.
 Crown copyright reserved. LINZ digital license no. WY35220QCB 8, TDOFB 522.
 Location of services is indicative only. Council accepts no liability for any error.
 Archaeological data supplied by NZ Archaeological Assoc/Dept. of Conservation.

Email: gis@westernbay.govt.nz Scale A4 - 1:2,000
 Date: 22/11/2012
 Operator: mlb
 Map: E:\Shape\DistrictPlan\District Plan - Plan Changes-New Format\Cultural heritage



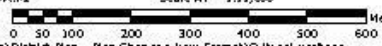

**DISTRICT PLAN
 CULTURAL HERITAGE FEATURE 113
 TE INAHI PA**





Produced using ArcMap by the Western Bay of Plenty District Council GIS Team. Crown copyright reserved. UNZ aqal license n.o. H435220Q @ B.TDO @ S22. Location of services is indicative only. Council accepts no liability for any error. Archaeological data supplied by NZ Archaeological Assoc./Dept. of Conservation.

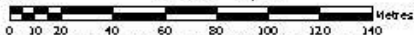
Email: gis@westernbay.govt.nz Scale M - 1:11,000
 Date: 23/11/2012
 Operator: mlb
 Map: E:\Shape\DistrictPlan\District Plan - Plan Changes-New Format\Cultural Heritage





Produced using ArcMap by the Western Bay of Plenty District Council GIS Team.
 Crown copyright reserved. LINZ digital license no. H4/352109/03 & T0095321.
 Location of services is indicative only. Council accepts no liability for any error.
 Archaeological data supplied by NZ Archaeological Assoc./Dept. of Conservation.

Email: gis@westembay.govt.nz Scale M - 1:2,500
 Date: 23/11/2012
 Operator: mib
 Map: E:\Shape\DistrictPlan\District Plan - Plan Changes-new format\Cultural Heritage





DISTRICT PLAN
CULTURAL HERITAGE FEATURE 115
OWHARA PA - HEREKAKI PA



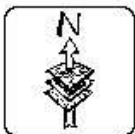


Produced using ArcMap by the Western Bay of Plenty District Council GIS Team.
 Crown copyright reserved. LINZ digital license no. H4/35220/0/08.8.700/522.
 Location of services is indicative only. Council accepts no liability for any error.
 Archaeological data supplied by NZ Archaeological Assoc./Dept. of Conservation.

Email: gis@westernbay.govt.nz Scale A4 - 1:1,000
 Date: 22/11/2012
 Operator: mlb
 Map: E:\Shape\DistrictPlan\District Plan - Plan Change 2 - New Format\Cultural Heritage




DISTRICT PLAN
 CULTURAL HERITAGE FEATURE 116
 PUKEMAIRE PA - FORT COLVILLE

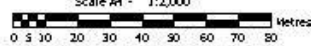




Produced using ArcMap by the Western Bay of Plenty District Council GIS Team.
 Crown copyright reserved. UNZ digital license no. WJ35220/QB B.TD08522.
 Location of services is indicative only. Council accepts no liability for any error.
 Archaeological data supplied by NZ Archaeological Assoc./Dept. of Conservation.

Email: gis@westernbay.govt.nz
 Date: 23/11/2012
 Operator: mlb
 Map: E:\Shape\DistrictPlan\District Plan - Plan Changes-new Format\Cultural Heritage

Scale 1:12,000



0 5 10 20 30 40 50 60 70 80 Metres



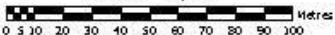
**DISTRICT PLAN
 CULTURAL HERITAGE FEATURE 117
 PUKEPOTO PA**



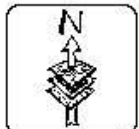


Produced using ArcMap by the Western Bay of Plenty District Council GIS Team.
 Crown copyright reserved. LINZ digital license no. H4/362210/03 B, TD09/522.
 Location of services is indicative only. Council accepts no liability for any error.
 Archaeological data supplied by NZ Archaeological Assoc/Dept. of Conservation.

Email: gis@westembay.govt.nz Scale M - 1:2,250
 Date: 23/11/2012
 Operator: mib
 Map: E:\Shape\DistrictPlan\District Plan - Plan Changes-New Format\Cultural Heritage



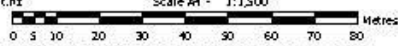

**DISTRICT PLAN
 CULTURAL HERITAGE FEATURE 118 - OKUREI PA,
 119 - SCARP/PIT, 120 - PA SITE,
 121-TIRO TIROWHETU PA**





Produced using ArcMap by the Western Bay of Plenty District Council GIS Team. Crown copyright reserved. LINZ digital license no. H435220Q/B B, TDO/B 522. Location of services is indicative only. Council accepts no liability for any error. Archaeological data supplied by NZ Archaeological Assoc./Dept. of Conservation.

Email: gis@westernbayofplenty.nz Scale M - 1:1,500
 Date: 23/11/2012
 Operator: mlb
 Map: E:\Shape\DistrictPlan\District Plan - Plan Changes-New Format\Cultural Heritage



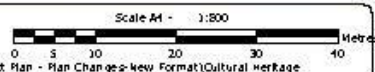

**DISTRICT PLAN
CULTURAL HERITAGE FEATURE 122
PA SITE**



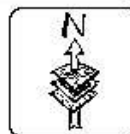


Produced using ArcMap by the Western Bay of Plenty District Council GIS Team.
 Crown copyright reserved. UNZ official license no. 4/35220Q/3 B.7005522.
 Location of services is indicative only. Council accepts no liability for any error.
 Archaeological data supplied by NZ Archaeological Assoc./Dept. of Conservation.

Email: gis@westernbay.govt.nz
 Date: 23/11/2012
 Operator: mlb
 Map: E:\Shape\DistrictPlan\District Plan - Plan Changes - New Format\Cultural Heritage



**DISTRICT PLAN
 CULTURAL HERITAGE FEATURE 123
 PA SITE**





Produced using ArcMap by the Western Bay of Plenty District Council GIS Team.
 Crown copyright reserved. NZ Official License no. H4/352209 @ B. TDO @ S22.
 Location of services is indicative only. Council accepts no liability for any error.
 Archaeological data supplied by NZ Archaeological Assoc./Dept. of Conservation.

Email: gis@westernbay.govt.nz
 Date: 23/11/2012
 Operator: mlb
 Map: E:\Shape\DistrictPlan\District Plan - Plan Changes-kew Format\Cultural Heritage

Scale M - 1:2,000



DISTRICT PLAN
 CULTURAL HERITAGE FEATURE 124
 PUKEHINA PA/RED OUBT






Produced using ArcMap by the Western Bay of Plenty District Council GIS Team.
 Crown copyright reserved. LINZ digital license no. W4/352200 Q8 B, T00 B 522.
 Location of services is indicative only. Council accepts no liability for any error.
 Archaeological data supplied by NZ Archaeological Assoc./Dept. of Conservation.

Email: gis@westernbay.govt.nz
 Date: 23/11/2012
 Operator: mib
 Map: E:\Shape\DistrictPlan\District Plan - Plan Changes-New Format\Cultural Heritage

Scale M - 1:1,200





**DISTRICT PLAN
 CULTURAL HERITAGE FEATURE 125
 WAEHEKE PA/KARAMURUMA PA**





Produced using ArcMap by the Western Bay of Plenty District Council GIS Team.
 Crown copyright reserved. LINZ a legal license no. H/352209/08 B. T00/0522.
 Location of services is indicative only. Council accepts no liability for any error.
 Archaeological data supplied by NZ Archaeological Assoc./Dept. of Conservation.

Email: gis@westernbay.govt.nz Scale A4 - 1:500
 Date: 22/11/2012
 Operator: mlb
 Map: E:\Shape\DistrictPlan\District Plan - Plan Changes-New Format\Built Heritage





**DISTRICT PLAN
 BUILT HERITAGE FEATURE 60
 BRIDGE (CATEGORY B)**





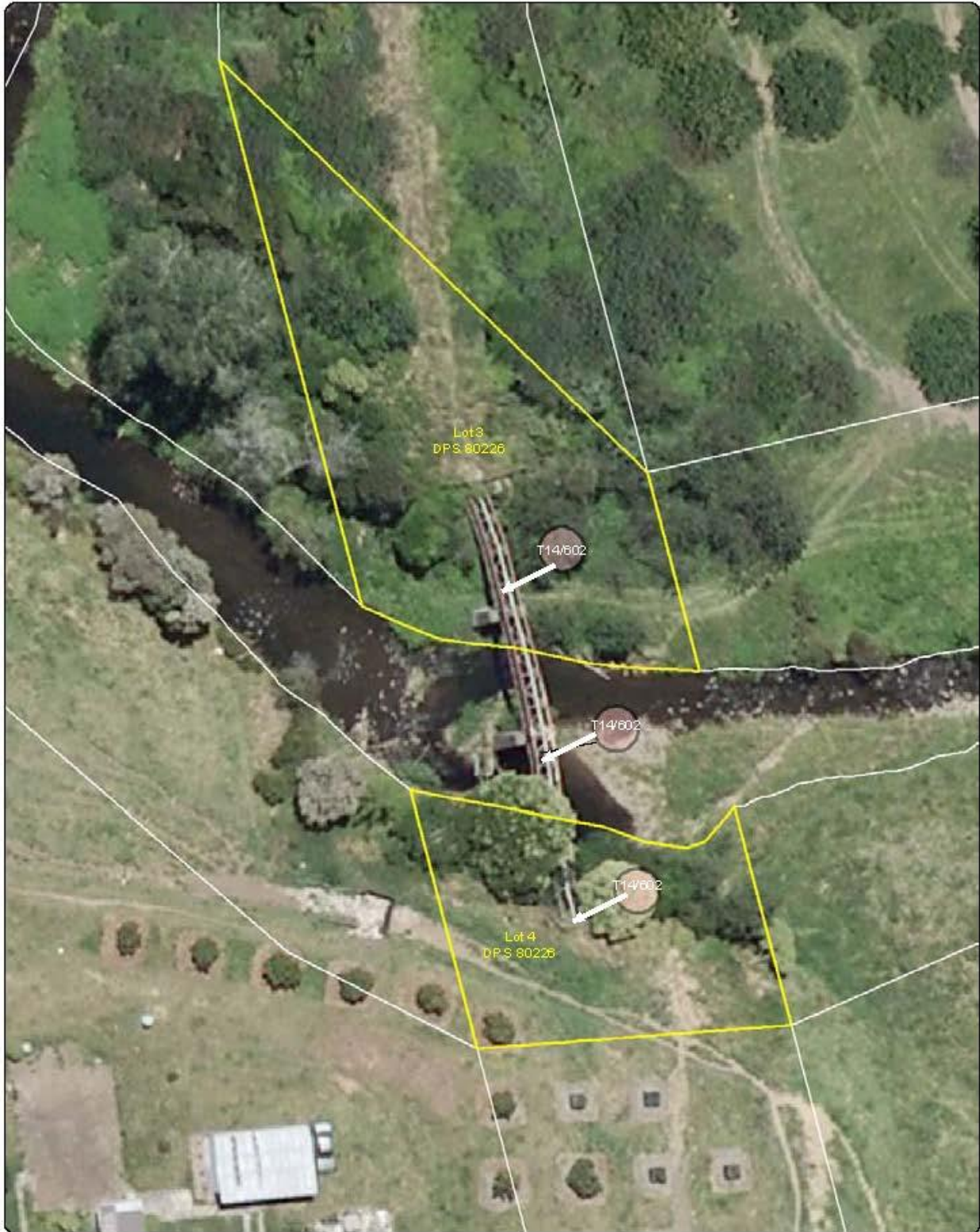
Produced using ArcMap by the Western Bay of Plenty District Council GIS Team.
 Crown copyright reserved. LINZ digital license no. WJ352209 QB B. TD08522.
 Location of services is indicative only. Council accepts no liability for any error.
 Archaeological data supplied by NZ Archaeological Assoc/Dept. of Conservation.

Email: gis@westernbay.govt.nz Scale A4 - 1:900
 Date: 22/11/2012
 Operator: mib
 Map: E:\Shape\DistrictPlan\District Plan - Plan Changes-New Format\Built Heritage



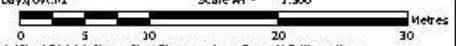

**DISTRICT PLAN
 BUILT HERITAGE FEATURE 61
 BRIDGE (CATEGORY B)**





Produced using ArcMap by the Western Bay of Plenty District Council GIS Team.
Crown copyright reserved. LINZ digital license no. H4/352209 (B, TDO) S22.
Location of services is indicative only. Council accepts no liability for any error.
Archaeological data supplied by NZ Archaeological Assoc./Dept. of Conservation.

Email: gis@westernbay.govt.nz Scale A1 - 1:300
Date: 22/11/2012
Operator: mlb
Map: E:\Shape\DistrictPlan\District Plan - Plan Changes-new Format\Built Heritage




**DISTRICT PLAN
BUILT HERITAGE FEATURE 62
BRIDGE (CATEGORY B)**





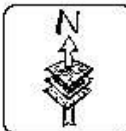
Produced using ArcMap by the Western Bay of Plenty District Council GIS Team. Crown copyright reserves. LINZ digital license no. H4/352200/08 8,700 522. Location of services is indicative only. Council accepts no liability for any error. Archaeological data supplied by NZ Archaeological Assoc./Dept. of Conservation.

Email: gis@westernbay.govt.nz
 Date: 22/11/2012
 Operator: mlb
 Map: E:\Shape\DistrictPlan\District Plan - Plan Changes-new Format\Built heritage

Scale 1:1000
 0 5 10 20 Metres



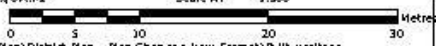
**DISTRICT PLAN
 BUILT HERITAGE FEATURE 63
 BRIDGE (CATEGORY B)**





Produced using ArcMap by the Western Bay of Plenty District Council GIS Team.
 Crown copyright reserved. UNZ a i q i a l l o n s e n o . H 4 3 5 2 2 0 Q @ B . T D O @ S 2 2 .
 Location of services is indicative only. Council accepts no liability for any error.
 Archaeological data supplied by NZ Archaeological Assoc./Dept. of Conservation.

Email: gis@westernbay.govt.nz Scale M - 1:500
 Date: 22/11/2012
 Operator: mlb
 Map: E:\Shape\DistrictPlan\District Plan - Plan Changes-New Format\Built heritage



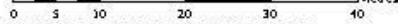

**DISTRICT PLAN
 BUILT HERITAGE FEATURE 64
 BRIDGE (CATEGORY B)**





Produced using ArcMap by the Western Bay of Plenty District Council GIS Team.
 Crown copyright reserved. UNZQL license no. H4/35220908 B.700B522.
 Location of services is indicative only. Council accepts no liability for any error.
 Archaeological data supplied by NZ Archaeological Assoc./Dept. of Conservation.

Email: gis@westernbay.govt.nz Scale A4 - 1:750
 Date: 22/11/2012
 Operator: mlb
 Map: E:\Shape\DistrictPlan\District Plan - Plan Changes-New Format\Built Heritage




**DISTRICT PLAN
 BUILT HERITAGE FEATURE 65
 BRIDGE (CATEGORY B)**





Produced using ArcMap by the Western Bay of Plenty District Council, 635 Teahi.
 Crown copyright reserved. LINZ digital license no. H9/05225/03 & T0003522.
 Location of services is indicative only. Council accepts no liability for any errors.
 Archaeological data supplied by NZ Archaeological Assoc/Dept. of Conservation.

Drawn: gja@wbpdc.govt.nz
 Date: 28/05/2014
 Operator: mjb
 Map: E:\Shape\DistrictPlan\District Plan - Plan Change-free Format\Built Heritage

Scale 66 - 1:500
 0 5 10 20 30 Meters



**DISTRICT PLAN
 BUILT HERITAGE FEATURE 66
 BRIDGE AND EMBANKMENT (CATEGORY B)**

