

January 2015



Paengaroa

a hive of activity



2015 - 2025

TePukeTM
goodness grows here 

www.paengaroa.co.nz

This plan has been prepared by community representatives.

Who's behind the Plan

Thanks to the following community stakeholder groups who have been instrumental in getting this Plan to the stage it's at now:

Paengaroa Community Association Inc.

Aims:

- Promote Paengaroa as a great place to live, learn, work and play
- Establish welcoming signage to Paengaroa
- Lift the profile of the community
- Encourage whole of community engagement and participation
- Facilitate artworks in and around the community
- Celebrate Paengaroa – history & future
- Strengthen generational links
- Strengthen business links within the community

Paengaroa School

Paengaroa Kindergarten

Paengaroa Hall Committee

Local Church Groups

Eastern Districts Rugby Club

Comvita

Local businesses

If you want to be a part of getting this Plan underway and can help to get action off the ground please get in touch with the Paengaroa Community Association via the website:

www.paengaroa.co.nz

COMMUNITY PLAN



Contents

Purpose of the plan	4
How this plan was developed and what we have done so far	5
Who we are	6
Where we came from.	8
What we have to offer	10
Focus and Actions for this Plan	13

Paengaroa a hive of activity





Purpose of the Plan

This Plan expresses the hopes and dreams of the Paengaroa community for the next ten years and charts a pathway to make these become a reality through a community partnership with Council and involving other external agencies. The primary aim of this Plan is to empower the Paengaroa community to take ownership and control of its own future and prosperity.

Representing the mandate of the people, the Plan enables service groups and individuals to undertake recorded actions

knowing the community has already agreed. In addition it provides the platform and the impetus to establish community partnerships with Council and to involve other external agencies with confidence. However, as a community, there is a lot we can do for ourselves.

We have a lot of enthusiastic people keen to lead the charge and make local people aware of what exists in and around Paengaroa and how we should be promoting our village in the future.

How this Plan was developed and what we have done so far

A small group of community-minded residents calling themselves the Connektas worked with Council staff to kick-start the plan by holding an “Expo” on the 21st of September 2013, at the Paengaroa hall. This was attended by more than 250 people, around 70 businesses were represented and the schools kapa haka group performed. It was a great opportunity to showcase our wonderful community and unearth many hidden talents and businesses. Subsequent to that we have held a series of meetings to discuss specific aspects of how we see the future of Paengaroa.

A community survey mailbox drop of the village was also undertaken. The results from this and the comments noted by the community at the “Expo” were collated. This resulted in a first cut prioritisation of the community’s main issues. The “Paengaroa Pyramid” identified number one priority for Paengaroa was around better access to the Paengaroa Domain. The issues are well know, eg parking, traffic movements, pedestrian safety, and general access.

The issues captured in the pyramid were grouped into activity areas and a series of targeted meetings were held to further explore how these could be addressed. The end result of this

exercise can be seen in the Focus, Outcomes and Actions section of this plan that has identified 36 key actions in the areas of;

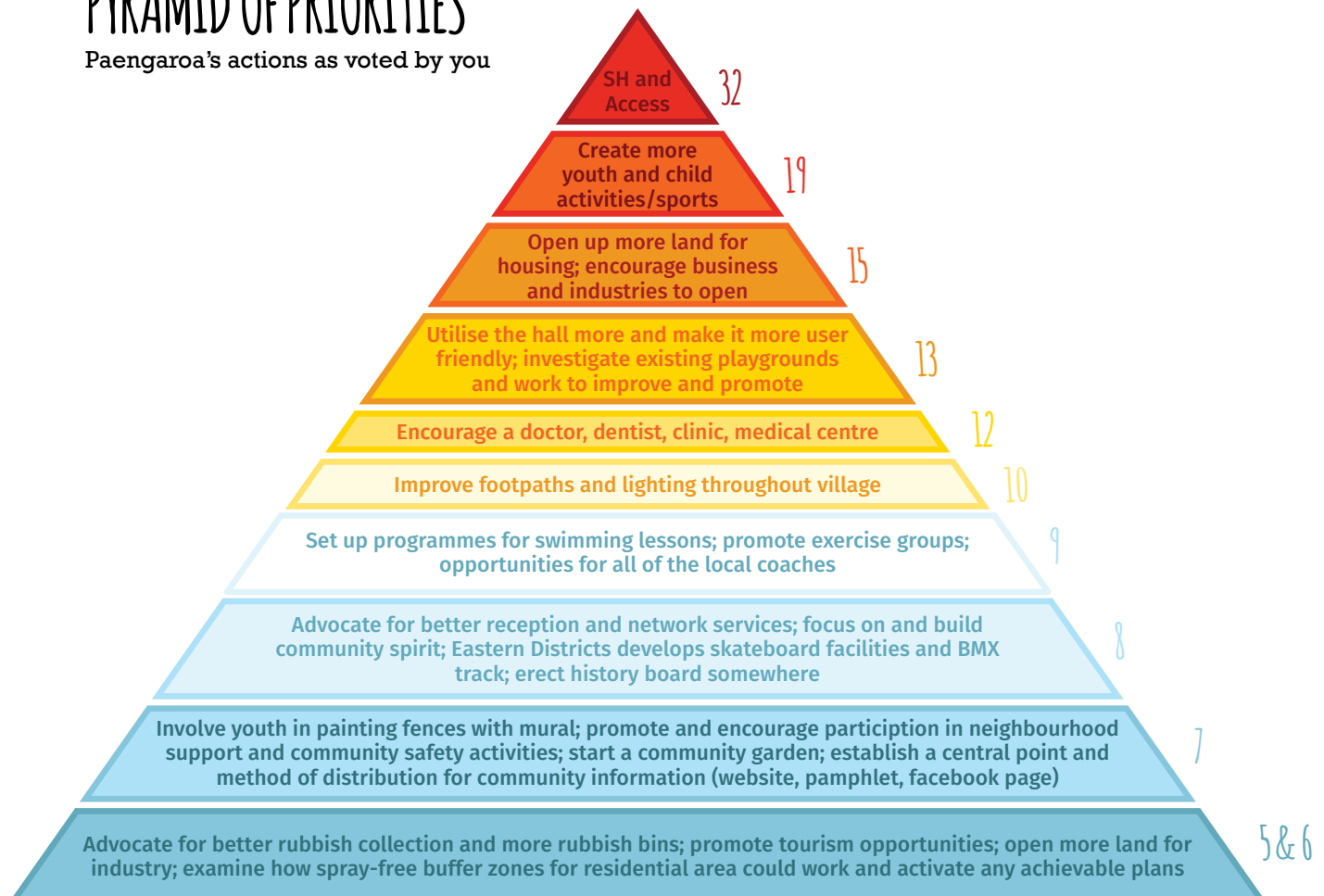
- Community
- Health
- Sport and Recreation / Leisure
- Economy
- Landuse
- Transportation and Infrastructure
- Environment
- Waste / Stormwater

The community has been kept informed of our progress through the Paengaroa Community newsletters and the Paengaroa Community Association has launched a website www.paengaroa.co.nz that showcases our local community assets, businesses and attractions.

The Community Association has been integral to the progress to date and as a result of their efforts we literally have put ourselves back on the map with three new road signs leading the way into the village.

PYRAMID OF PRIORITIES

Paengaroa’s actions as voted by you

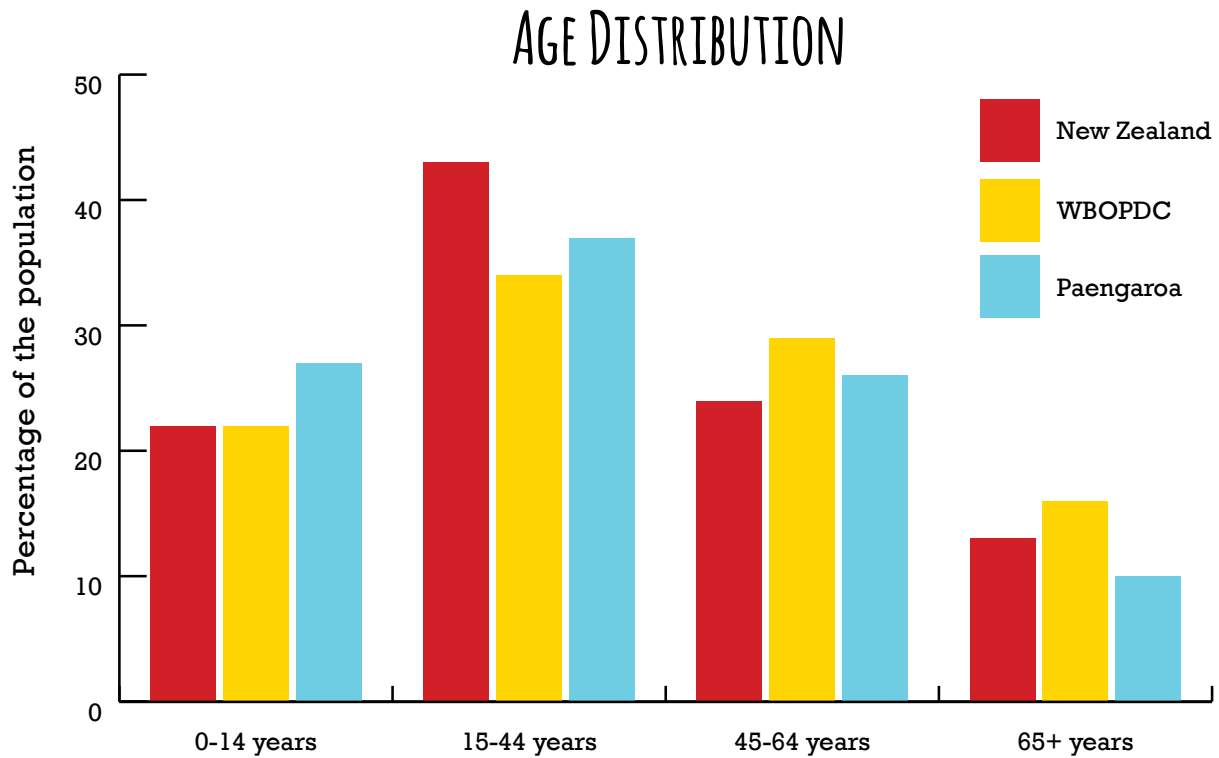


Who we are

Paengaroa is a small village in the Western Bay of Plenty located about 11 kilometres from Te Puke and 35 kilometres from central Tauranga.

Paengaroa is semi-rural with many farms and orchards dotting the surrounding area. Houses in the immediate area are generally modest family homes situated on larger sections, most with a wide view of the surrounding area.

We are a rural community of around 880 with a mix of ages and ethnicity. We have a relatively high number of young residents and are predominantly a European community with a high proportion of Māori residents (33%) and diversity with people from the Pacific and Asia.



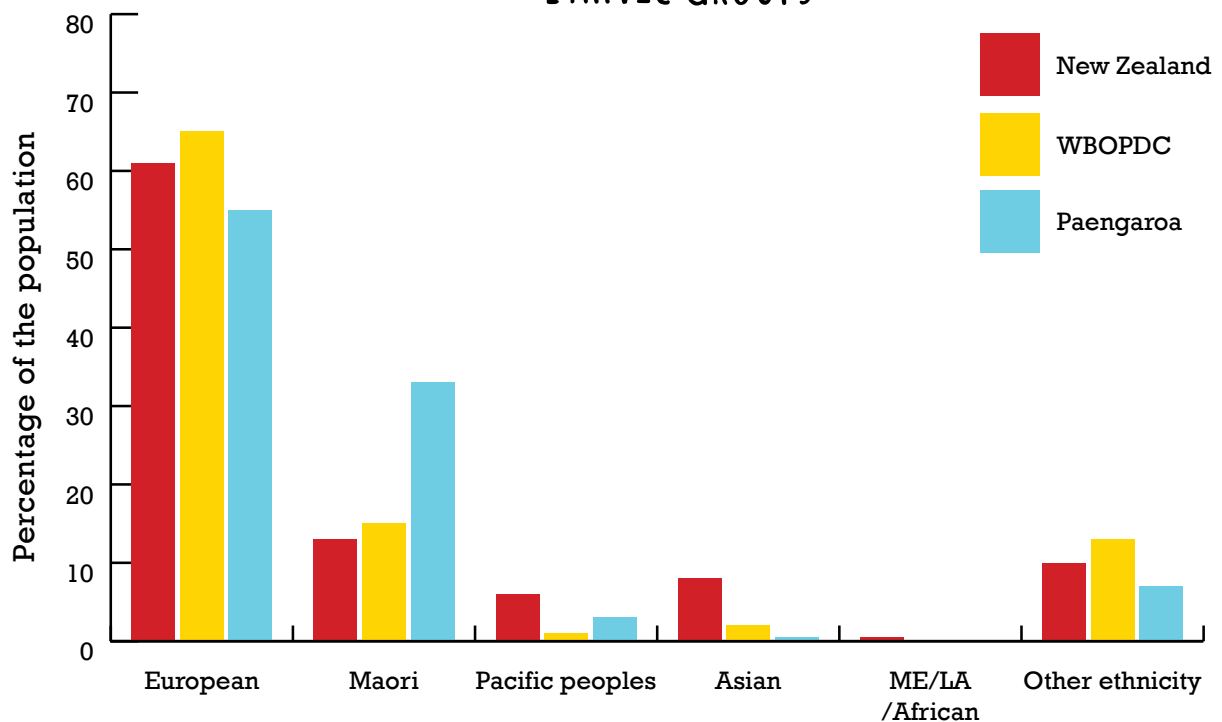
We are a fairly typical New Zealand town in terms of our overall household incomes and personal income levels. The majority of our population have a secondary or post-school qualification and the most common personal income bracket is \$30,000 - \$50,000.

Our community is largely made up of family households of couples with children. We do however have a greater number of one-parent-with-children families than other areas of the District.

Our other points of difference are the higher than average number of rented dwellings and lower than average access to the internet.

Our small village encourages creative endeavours, we embrace diversity and we aim to develop a welcoming and supportive place for creativity across the creative spectrum.

ETHNIC GROUPS





Where we came from

Paengaroa has been occupied by many Tupuna and their hapu of Te Arawa since the arrival of the waka at Maketu around 1350.

It began with Tamatekapua then Waitaha, Rangitahi and Tapuika. There were also several marae within the rohe of Paengaroa - one of which belonged to a well known ancestor, Rangitahi, who had eight children. They later became known as, “nga pumanawa e waru o Te Arawa” (the eight beating hearts of Te Arawa.) His pa was called Pakatore.

Marukukere, a well known Tapuika ancestor, had his own pa site within Paengaroa and a thriving network of marakai (gardens) was established there during the 1600's.

At the time of the year when the kumara was harvested, Marukukere would fasten a wooden spade in the mouth of his dog, which then carried it to Kahu (from the Waiohau tribe who formerly occupied the Auckland Isthmus) and his people. Kahu understood the meaning of this: it was a signal for him to organise a company to come and harvest Marukukere's kumara.

Marukukere and his dog were killed by Kahu and his people, resulting in a war with revenge being exacted by Marukukere's nephew Moko. Kahu and his people were driven out of the area.

flows past the village, settling the wider region, planting crops and harvesting the natural environment.

For the local Māori iwi the Kaituna River is the umbilical chord which connects the inland “womb” of Rotorua. The river is a lifeline which enabled the Māori family groups to travel back and forth from Rotorua to the sea. The Tapuika people are the custodians of the river and ensure its health and vitality is preserved for future generations.

In 1769 Captain Cook sailed to this area naming it the Bay of Plenty in recognition of the dense vegetation and thriving crops of the Māori villages. Over time, Paengaroa had seen many battles over ownership of the area. It wasn't until the Māori Land Court (1st August 1878) became involved that ownership was decided upon. The Court in its deliberation awarded ownership to Ngati Rangitahi, Ngati Tunohopu, Ngati Pikiāo, Ngati Whakaue Ngati Rangiwewehi, Ngati Rangiteaorere and Tuhourangi.

European settlement in the Western Bay of Plenty began when flax traders arrived into the area around 1830. Many of the traders married local Māori women and remained in the area. Following the 1864 Land Wars, in which Paengaroa also played a part, settlement continued to grow and farming became popular in the area. Surveying of the district commenced in 1867, and on



February 4th 1903 the settlement for Paengaroa was established on auctioned crown land.

Before the introduction of motorised transport, all horse-drawn traffic travelled through Paengaroa - from Maketu to Rotorua and Papamoa to Whakatane - along the Old Coach Road; hence the name of "The Junction". Stables were built and closely followed by a blacksmith, wheelwright, bookmaker and saddler, plus a boarding house, post office, butcher and general store. This development was supported by the development of flax mills and railway camps. In 1903 the community gained a Bank of New Zealand and Bank of Australasia. Mr Gilmore opened his workshop as a hall for social functions.

All lowland was covered in water in which flax and cabbage trees grew. The highland was covered in ti tree, tutu bushes and stunted fern. Paengaroa was named Siberia due to the pumice soil, derived from the Kaharoa Ash shower, which was deficient in cobalt causing bush sickness in stock.

Bush sickness was resolved in 1935 when farmers added cobalt to top dressing and also as a drench for stock. This saw dairying and sheep farming "take off", along with the cropping of maize, turnips and oats for horse feed. A creamery was built to produce cheese and later butter.

In 1905 it was time to consider the eleven children's schooling and the Education Board appointed a teacher for the Paengaroa and Pongakawa children. The number of children increased to 25 and in 1908 a classroom and porch was erected on the present Paengaroa site.

The Paengaroa Progressive League was formed to support the community with one of their main projects being the Paengaroa to Rotorua railway. They went on to form the Agricultural & Pastoral Association, and later the Farmers Union took over the Leagues role - where they worked to get a porter and phone for the Paengaroa Railway, plus agitated for maintenance of certain roads. Later they joined the Te Puke branch and became Federated Farmers.

In 1936 a Young Farmers Group was established along with the Sunshine Club for "girls" followed by a Bachelors Club. To meet the sport and recreation needs of Paengaroa residents an Athletics club formed in 1906 which included stock and horse events. This was followed by the establishment of a Hack Racing Club, Football Club, Hockey team, Tennis Club, Cricket Club and Golf Club and course.

(*Paengaroa Then and Now*. 1956, Roy Mckenzie / Petera Tapsell WBOPDC)

What we have to offer

We may be small but we punch above our weight in many ways. Nestled amongst some of the most fertile land in New Zealand, Paengaroa is a flourishing horticultural and agricultural community based around kiwifruit, avocado, natural bee products and dairying. Paengaroa village contains a small selection of shops and businesses including restaurants and accommodation.

We are proud to be home to the headquarters of the global natural health and beauty products company Comvita.

On our door step we have a number of well-established tourist attractions that offer a myriad of active and passive pursuits for locals, as well as New Zealand and international visitors.

Paengaroa School and Kindergarten

We have an excellent multi-ethnic local school (with kindergarten alongside) set in attractive, well-maintained grounds with a recently built swimming pool. This facility has enhanced the school and is well-used by families and groups in the wider community. Inter-generational connections with the school are valued by families and these links contribute to a strong sense of belonging for all.

We welcome you to this awesome place - A place where we collaborate with nature - We discover; we question; we wonder.

At Paengaroa Kindergarten we champion childhood. Children can learn at their own pace; unhurried. It's a place where they can connect with each other and with their environment; where simplicity creates imagination and innovation.

We are a rural kindergarten situated next to the Paengaroa School and are proud to be part of the Tauranga Kindergarten Association.

Sessions:

Monday to Thursday - 8.30am to 2.30pm; Friday - 8.30am to 12.45pm

Ph: 07 533 1538

email: paengaroa@taurangakindergartens.org.nz



Paengaroa Community Hall

The Paengaroa Community Hall is a treasured facility which is currently well-used for a range of weekly activities and classes including Zumba and indoor bowls. It has many useful spaces that are available for all types of regular events, and for those special one-off events such as conferences, family reunions or special celebrations.

There is ample on-site parking and a fully-equipped commercial kitchen that is available for hire for commercial food preparation.

Facilities:

- Main hall with stage: accommodates 300 for conferences and meetings or 180 for weddings.
- Supper room/small hall: accommodates 100 for conferences and meetings or 80 for weddings.



The Paengaroa Domain and Eastern Districts Rugby Club

The Domain is one of the largest public reserves in the District and is home to the Eastern Districts Rugby and Sports Club. Eastern Districts was established in 1961 and has played a significant part in both Paengaroa and the wider community since then. With players selected for the Māori All Blacks, All Blacks and Junior All Blacks teams as well as Provincial representative teams over the years, Eastern Districts has a proud heritage. Junior rugby, senior rugby and senior netball teams all wear the ED emblem with pride when competing in their respective competitions, and a vibrant Golden Oldies tradition continues with both netball and rugby.

Our clubrooms are a friendly and welcoming place to relax and enjoy the camaraderie of the others. New members are always welcome into our progressive, family-oriented Club that has traditional values and a strong heart. Eastern Districts sits proudly on the Paengaroa Domain as a gathering point for the community. After 50 years we look to the future with a vision of enhanced facilities, bringing greater recreational involvement and participation for all those in Paengaroa as well as for the greater Bay of Plenty area.

Other Local Reserves

Conway Road Reserve - currently undeveloped.

Pokopoko Stream Reserve – currently road reserve.

Other Local Landmarks

State Highway / Paengaroa Historic Pah Waharua – the latest cultural addition to the Tauranga Eastern Link. The carving by local hapū depicts a Māori resident from the 1600's who had five sons. As the area was used for growing vegetables, the carving incorporates a wooden spade with a kumara in the middle of it and commemorates the site of an historic Māori village.

Paengaroa Radio Mast – Visible from all parts of the village and the wider surrounding area, the 155m tall Radio NZ mast is an important part of the national communications network providing public news and information and also has a Civil Defence role in times of emergency.

Te Puke A & P Show

The Agricultural and Pastoral Show is held annually at the Showgrounds in Paengaroa and offers a wide range of activities to keep the whole family entertained!

A Kiwi tradition, the shows have something for everyone including live entertainment, livestock competitions, agricultural demonstrations and displays, amusements, side shows and a range of stalls selling everything from tractors to candyfloss.

The A and P show is an opportunity for people to display their talents to the community and sell their wares to raise funds. Exhibits can be made in Handcraft, Children, Vegetables, Flowers, Domestic Produce, Farm Animals, Pet and Photography sections.





Focus, Outcomes and Actions for this plan

We will focus on a number of priority areas over the next 10 years to deliver tangible improvements to the Paengaroa community.

A focus on building a vibrant, liveable community with quality services, local parks and facilities

Outcomes:

- Paengaroa is an accessible and safe community.
- A clean safe environment.
- The community will have improved future stormwater and wastewater services.

TRANSPORTATION AND INFRASTRUCTURE

Paengaroa is an accessible and safe community.

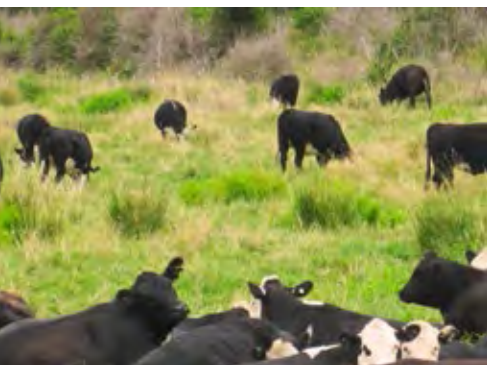
Key Action	How it will be done	Who will be involved
1 Address roading, road safety and access issues relating to TEL and SH.	<ul style="list-style-type: none"> • Begin negotiations with NZTA and clarify issues. • Clarify parking arrangements on highway. • Ensure good future safe access across SH33 to Paengaroa Domain. • Keep access to the industrial area. • Ability for residents and children to cross the State Highway safely. • Ensure intersection will meet future needs of community. • Pull over area for travellers - possibly incorporating toilets, murals, truck stop, landscaping. • Roothing is safe for cycling and walkway circuits. • Initiate road safety study to be undertaken by NZTA and District Council. • Hold meeting to discuss above study and determine way forward. 	<p>Lead:</p> <p>Community, Paengaroa Community Association, District Council, Eastern Districts, Comvita, Hall committee, Paengaroa School, Councillors, Kindergarten, Church</p>
2 Assess footpaths/ lighting throughout village.	<ul style="list-style-type: none"> • Investigate need for a footpath over the Wilson Road South bridge. • Submit to District Council annual plan. 	<p>Lead:</p> <p>Community, Connekta group, District Council roading</p>
3 Investigate provision of public transport services.	<ul style="list-style-type: none"> • Investigate bus services, including regularity, and other shorter route options. • Ensure that timetables are freely available. • Improve bus stopping points and bus shelter options. • Monitor regional transport plans and ensure that passenger rail is included. • Investigate car pooling options. 	<p>Lead:</p> <p>Community, Regional Council, District Council roading</p> <p>Lead:</p> <p>Community</p>



ENVIRONMENT

A clean safe environment.

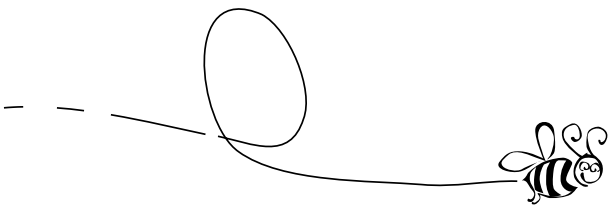
Key Action	How it will be done	Who will be involved
4 Promote more trees/ fruit trees and gardens in the urban area and public spaces.	<ul style="list-style-type: none"> Identify key public spaces for use as public gardens (aesthetic). Submissions to the Te Puke Maketu Reserves Management Plan for public spaces. Ensure trees are appropriate for areas in which they are planted. Partner with Comvita to establish a community garden. 	<p>Lead:</p> <p>Community, local businesses, Envirohub BOP, District Council reserves officers.</p>
5 Plan community access to, and utilisation of the rivers.	<ul style="list-style-type: none"> Identify local places for community access to the river. Identify likely future areas, both public and private, for river bank walkways and give consideration to low-impact amenities. Develop the river banks for ecological purposes. Ensure adequate signage and advertising of river accesses and walkways. 	<p>Lead:</p> <p>Community, Fish and Game, Forest and Bird, Waihi District Drainage Board, District Council, Regional Council, tangata whenua</p>
6 Promote care of the natural environment.	<ul style="list-style-type: none"> Publish articles in the community newsletter. Investigate how Enviroschool programme could be expanded to include community. 	<p>Lead:</p> <p>Community, communications group, School, Regional Council</p>
7 Examine how spray-free buffer zones for residential areas could work.	<ul style="list-style-type: none"> Activate any achievable plans. Submit to Regional Council Plans. 	<p>Lead:</p> <p>Community, Regional Council, Orchardists, District Council</p>



WASTE/STORMWATER

Paengaroa utility services are upgraded in affordable and timely manner as growth occurs.

Key Action	How it will be done	Who will be involved
8 Improve waste disposal options.	<ul style="list-style-type: none"> Advocate for better rubbish collection and more rubbish bins – everywhere. Determine and then implement the best options for the community around recycling service. Advertise when rubbish collections and transfer station facilities are available. 	<p>Lead: Paengaroa Association</p> <p>Community, District Council utilities, Regional Council</p>
9 Ensure sewerage planning will be sufficient for the future.	<ul style="list-style-type: none"> Investigate sewage options for the community. Ensure sewerage options for future land development are in line with the best long-term interests of the community. Develop preferred options. Inform residents of sewerage options. 	<p>Lead: Paengaroa Association</p> <p>Community, District Council utilities, Regional Council</p>
10 Stormwater should be well planned and not ad hoc.	<ul style="list-style-type: none"> Ensure a long term integrated plan is developed for storm water that includes any future development. Investigate modern best practice methods of handling stormwater, eg. ponds and wetlands, not just more pipes. Ensure outflows and their impacts are considered in any plan. Quantify stormwater outflows. 	<p>Lead: Paengaroa Association and District Council</p> <p>Community, District Council utilities, Regional Council</p>
11 Link stormwater management with walkways.	<ul style="list-style-type: none"> Investigate overflow ponds for stormwater control. Ensure ponds are designed to encourage biodiversity. Plant walkway with native trees to encourage native bird and insect species. 	<p>Lead:</p> <p>Community, District Council utilities, Regional Council</p>



A focus on building a community committed to caring for each other and the village

Paengaroa will continue to be a place where most people know each other, where people are helpful and visitors are welcome. These are the things that our community values. Retaining these values, while at the same time increasing our population, creating more jobs and bringing more visitors, will be our challenge. This challenge needs to be faced by residents, community groups and agencies alike that all have a role to play. We will work with central and local government agencies to identify local solutions to employment, health and welfare concerns that help support the community's aspirations for a better and stronger village community.

Outcomes:

- Everyone contributes towards building a positive and inclusive community with a sense of pride.
- The people value and embrace our heritage and history.
- Our community is a healthy place for us and our kids.
- We have sufficient recreation/leisure facilities and open space for a healthy community.

COMMUNITY

Everyone contributes towards building a positive and inclusive community, with a sense of pride.

Key Action	How it will be done	Who will be involved
12 Build community spirit through events and use of reserves and facilities.	<ul style="list-style-type: none"> • Encourage greater use of the community hall with a view to it becoming self-funding. • Encourage more family friendly events. • Hold multicultural music and arts events. • A&P Show and successful equestrian and pony club events are supported. • Provision of music and arts activities. 	<p>Lead: Hall</p> <p>Community, Hall committee, District Council reserves, Eastern Districts</p> <p>Lead:</p> <p>Community, Cindy Hill-Rennie, youth groups</p> <p>Lead:</p> <p>Community,</p>
13 Establish a central point and method of distribution for community information.	<ul style="list-style-type: none"> • Provide website/pamphlet/information centre/Facebook page. • Upgrade community noticeboard. 	<p>Lead: Paengaroa Association</p> <p>Community, School can help publishing and distributing a newsletter, Communications group</p>
14 Encourage more young families to move here.	<ul style="list-style-type: none"> • Promote benefits and opportunities of living in Paengaroa through all media. • Support events at Paengaroa School, eg. Top School • Install links from and to all Maketu-Te Puke ward websites: Te Puke, Paengaroa, Maketu, Pongakawa, Pukehina and associated schools. 	<p>Lead:</p> <p>Community, School, Kindergarten, Te Puke EDG</p>
15 Ensure community is safe for our children and families	<ul style="list-style-type: none"> • Promote and encourage participation in neighbourhood support and community safety activities, including emergency management planning. • Provide and promote road, cycle, footpath safety education. 	<p>Lead:</p> <p>Community, NZ Police, Civil Defence and Emergency Management, Fire service, Neighbourhood Support, TravelSafe programme</p>

COMMUNITY (continued)

Everyone contributes towards building a positive and inclusive community, with a sense of pride.

Key Action	How it will be done	Who will be involved
<p>16 Provide development activities and opportunities for children and young people.</p>	<ul style="list-style-type: none"> Investigate childcare and development needs for Paengaroa. Develop a directory that identifies and lists groups and services that provide activities for children and young people. Establish a community group to identify and coordinate recreation and development activities for young people. (May include: Youth group(s), painting public fences and amenities with mural/art, dance groups, music tutorials/sessions, bus trips, waka ama, horse trekking, adventure park activities). Investigate opportunities to appoint a part time project worker to initiate priority key child and youth development actions. 	<p>Lead: Paengaroa Youth.</p> <p>Community, Te Puke Youth Hub, Maketu Hauora, Paengaroa school, Te Puke High School, Te Puke music clubs, church groups, District Council, Eastern Districts, Sport Bay of Plenty, Paengaroa Community Association, Paengaroa Hall committee, local businesses, (young) families with young children.</p>

HEALTH

Our community is a healthy place for us and our kids.

Key Action	How it will be done	Who will be involved
<p>17 Encourage healthy lifestyles.</p>	<ul style="list-style-type: none"> Newsletters and website information promote the benefits of a healthy lifestyle. Reinforce smoke-free environments such as Paengaroa Domain. 	<p>Lead: Paengaroa Association Comvita</p>
<p>18 Health services are accessible.</p>	<ul style="list-style-type: none"> Encourage residents to access Te Puke which is well provided with health services. Ensure that information about transport options is available via bus timetables and other information in newsletters and website information. 	<p>Lead: Community, Connekta group, DHB, Plunket, nursing service, Maketu Hauora, School, Community Noticeboard</p>
<p>19 Community activities reflect a holistic health focus.</p>	<ul style="list-style-type: none"> Encourage businesses to consider how they can contribute to the community wellbeing. 	<p>Lead: Community, Maybe Comvita would lead this. Links with spray buffer above.</p>
<p>20 Encourage healthy nutrition.</p>	<ul style="list-style-type: none"> Establish a community garden. 	<p>Lead: Community, School, Envirohub – Green Scapes, Comvita</p>
<p>21 Encourage more people to be active.</p>	<ul style="list-style-type: none"> Build on the existing facilities such as swimming pool, by encouraging club activities. 	<p>Lead: Community, assisted by Eastern Districts</p>

SPORT AND RECREATION/LEISURE

We have sufficient recreation/leisure facilities and open space for a healthy community.

Key Action	How it will be done	Who will be involved
<p>22 Provide recreation facilities to meet the needs of the community.</p>	<ul style="list-style-type: none"> • Ensure the provision of recreation facilities at the Paengaroa Domain, Conway Road Reserve or other suitable sites are noted in the Te Puke Maketu Reserves Management Plan. • Investigate the development of a community recreation centre to cater for all ages and incorporate a gymnasium, volleyball/basketball courts with space for aerobics/pilates and other activities. • Have the ability in the short term to attract regional events. • Have the ability in the long term (30-50 years) to attract national events. • Consider the development in partnership with schools, private enterprises. • Organise more community support, family-orientated fun days. • Investigate the potential for a national sport academy. 	<p>Lead: Eastern Districts</p> <p>Community and sports clubs, WBOP District Council, Hall committee, Paengaroa School, Paengaroa Community Association</p>



SPORT AND RECREATION/LEISURE (continued)

We have sufficient recreation/leisure facilities and open space for a healthy community.

Key Action	How it will be done	Who will be involved
<p>23 Establish cycle ways and walkways.</p>	<ul style="list-style-type: none"> • During the implementation of the Walking and Cycling Strategy and the Te Puke Maketu Ward Reserve Management Plan, ensure Paengaroa has adequate walking and cycling connections. • As an immediate priority, continue to investigate opportunities and lobby Western Bay of Plenty District Council and New Zealand Transport Agency for a walkway/ cycleway linking Paengaroa to Te Puke and Maketu. • Develop all weather walkways/cycle ways that are safe and link with existing and future transport walkways/cycle ways/ reserves/open spaces. • Prioritise key roads for sealing eg. Allport Road. 	<p>Lead: Paengaroa Community Association</p> <p>Sport BOP, community and sports clubs, WBOP District Council, Hall committee, Paengaroa School, Paengaroa Community Association</p>
<p>24 Address open space recreational needs for the future by developing a strategy and action plan.</p>	<ul style="list-style-type: none"> • Ensure aspirations of this plan are noted in the Western Bay of Plenty District Council's Reserves Management plans • Rationalise use and ownership of Council-owned land e.g. Pokopoko Stream, Paengaroa Domain • Ensure Pokopoko Stream reserve is only divested if proceeds come directly back to the Paengaroa community. If retained, it could be developed into a bush reserve with walkways. • Increase connectivity through riparian strips along Kaikokopu Stream - Black Road, Old Coach Road - Allport Road. • Investigate potential to designate land for future reserves. • Ensure Conway Road reserve is retained for future use as a recreational reserve by nearby neighbours. • Develop skateboard facilities and BMX track. 	<p>Lead: Paengaroa Association</p> <p>Community, Eastern Districts, Hall committee, School, Comvita</p> <p>District Council reserves, BMX clubs</p>
<p>25 Playgrounds are accessible and safe.</p>	<ul style="list-style-type: none"> • Ensure existing playgrounds are safe. (See "transport" section around SH crossing.) • Promote availability of playgrounds. 	<p>Lead:</p> <p>Community, District Council reserves, Eastern Districts, Hall committee, school, Paengaroa Community Association</p>

HERITAGE AND HISTORY *(continued)*

The people value and embrace our heritage and history.

Key Action	How it will be done	Who will be involved
<p>26 Promote local heritage and history.</p>	<ul style="list-style-type: none"> Identify sites for a history board. Fund and construct a history board. Determine and then promote the character of Paengaroa. Develop a vision capturing the look and feel of Paengaroa, based on the words below: heritage / character / rustic / authentic / history / old fashioned values / wagon / antique / unique / health Erect a large sculpture and artwork, similar to Paeroa's L&P bottle. Paengaroa's example could be a coach. Determine an appropriate and safe location for this sculpture. 	<p>Lead: Community, Hall committee underway</p> <p>Lead: Community, Connekta group</p> <p>Lead: Community, District Council, John Fowler - underway</p>
<p>27 Support cultural development throughout the community.</p>	<ul style="list-style-type: none"> Ensure Māori history is captured in signage. Ensure the story behind the name "Paengaroa" is known. Encourage participation by the whole community. 	<p>Lead: Community, tangata whenua</p>



A focus on building economic prosperity

Paengaroa will have a stable and growing population supported by local businesses providing improved local employment opportunities and a flourishing visitor economy. We see building economic prosperity as being the key to the future of Paengaroa. We will work with iwi, central government, Western Bay of Plenty District Council and in particular other agencies such as Priority One and Te Puke Economic Development Group to progress our priorities. There are many innovative people in and around Paengaroa with great ideas just waiting for the resources to make a difference to the village.

The issue of affordable housing is also critical to the long-term sustainability of our community.

Outcomes:

- The economy is robust and there is growth in small and large business.
- Development in the village will enhance and protect our unique village lifestyle.

ECONOMY

The economy is robust and there is growth in small and larger businesses.

Key Action	How it will be done	Who will be involved
<p>28 Businesses and industries are encouraged to open in Paengaroa.</p>	<ul style="list-style-type: none"> • Information is available on how and where new businesses can open. 	<p>Lead:</p> <p>Community, Comvita, Te Puke EDG, Priority One, District Council, Regional Council, BOP Tourism, tangata whenua</p>
<p>29 Promote tourism opportunities.</p>	<ul style="list-style-type: none"> • Use newsletter and website. • Link to other tourism providers, for example: <ul style="list-style-type: none"> • Goodness grows here; the tourism promotion run by Te Puke Economic Development Group. • Kiwi 360. • Comvita. • Kaituna River: kayaking, rafting. • Other major tourism operators. • Key unsealed roads are sealed; infrastructure and roads servicing NZ's major exports are prioritised. • Build relationships with tangata whenua. 	<p>Lead:</p> <p>Community, Comvita, Te Puke EDG, Priority One, District Council, Regional Council, BOP Tourism, tangata whenua</p>
<p>30 Build our shopping hub:</p> <ul style="list-style-type: none"> • Encourage more retail shops to establish. • Promote Paengaroa businesses. • Encourage locals to use local services and products. • Follow Comvita's enthusiasm in professionalism. • Shopping complex is small and tidy. 	<ul style="list-style-type: none"> • Use newsletter advertising and the Paengaroa website. • Encourage businesses to participate in local business awards events. • Encourage retailers that reflect the natural healthy options to build on Comvita's point of difference. • Encourage full use of commercial properties. • Investigate the replacement of counter mail with post office boxes. 	<p>Lead:</p> <p>Community, Comvita, Te Puke EDG, Priority One, District Council, Hall committee.</p>

ECONOMY (continued)

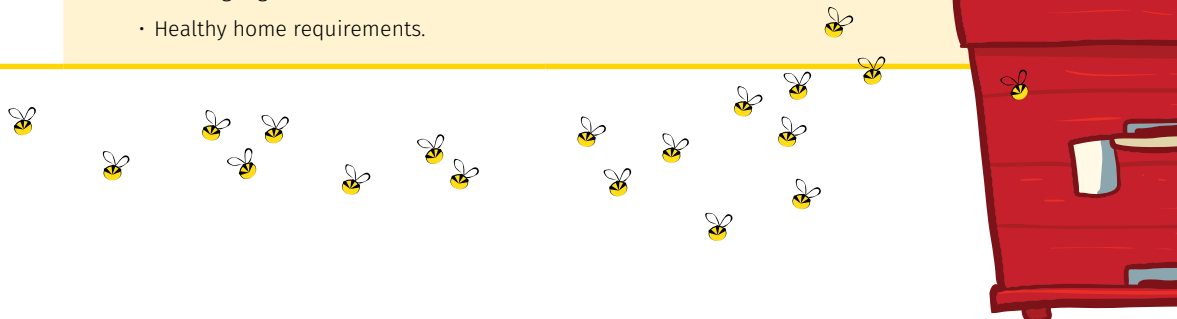
The economy is robust and there is growth in small and larger businesses.

Key Action	How it will be done	Who will be involved
31 Improve broadband and cell phone access and service.	<ul style="list-style-type: none"> Advocate to communication providers (for example: Spark, Vodafone) to assess Paengarooa area for effective level of service. 	<p>Lead: Priority One</p> <p>Community, District Council, Regional Council, Telecommunication providers</p>
32 Identify and promote more local employment opportunities.	<ul style="list-style-type: none"> Complete a stocktake of all employment types and numbers at businesses in the Paengarooa area. Encourage local businesses to advertise vacancies on the Paengarooa website. Encourage home-based after school care. Support early establishment of Rangiuru Business Park. 	<p>Lead: Paengarooa Association</p> <p>Community, Comvita, SEEKA, ZESPRI, Te Puke EDG, local businesses, MSD.</p>

LAND USE

Development in the village will enhance and protect our unique village lifestyle.

Key Action	How it will be done	Who will be involved
33 Identify regional expectations around growth in Paengarooa.	<ul style="list-style-type: none"> Respond to housing needs as identified. Participate in Smartgrowth: particularly the Smartgrowth Settlement Pattern project. Consider Conway Road reserve as recreational reserve for future housing. Investigate purchase of commercial land adjoining the Domain for future proofing better access and parking. 	<p>Lead: Paengarooa Association</p> <p>Community, Te Puke EDG, Priority One, District Council planners and property, Regional Council, Housing NZ</p>
34 Respond to commercial/industrial/residential land needs.	<ul style="list-style-type: none"> Participate in Smartgrowth: particularly, the Smartgrowth Settlement Pattern project. Project the likely infrastructure needs to support commercial areas and progress it. 	<p>Lead: Paengarooa Association</p> <p>Community, Te Puke EDG, Priority One, District Council planners and property, Regional Council, Housing NZ</p>
35 Development will be in keeping with the village look and feel.	<ul style="list-style-type: none"> Develop voluntary guidelines for homeowners and property developers. 	<p>Lead: Paengarooa Association</p> <p>Community, District Council planners</p>
36 Encourage householders to take a pride in their properties.	<ul style="list-style-type: none"> Encourage landlords towards household maintenance. Encourage tenants towards household maintenance. Build an understanding about: <ul style="list-style-type: none"> Building regulations Healthy home requirements. 	<p>Lead: Paengarooa Association</p> <p>Community, District Council planners and property, Paengarooa Community Association</p>





Paengaroa
a hive of activity **TePuke** region

If you would like further information please contact
the Paengaroa Community Association Inc.

www.paengaroa.co.nz

